

Product datasheet for **TA327350**

H3FT (HIST3H3) Rabbit Polyclonal Antibody

Product data:

Product Type:	Primary Antibodies
Applications:	ChIP, ChIP-seq, ELISA, ICC/IF, IHC, IP, WB
Recommended Dilution:	WB,1:500 - 1:1000 DB,1:500 - 1:1000 IHC-P,1:50 - 1:200 IF/ICC,1:50 - 1:200 IP,0.5ug-4ug antibody for 400ug-600ug extracts of whole cells ELISA,Recommended starting concentration is 1 µg/mL. Please optimize the concentration based on your specific assay requirements. ChIP,5µg antibody for 5µg-10µg of Chromatin ChIP-seq,1:20 - 1:100
Reactivity:	Human, Mouse, Rat, Other (Wide Range)
Host:	Rabbit
Isotype:	IgG
Clonality:	Polyclonal
Formulation:	Buffer: PBS with 0.05% proclin300,50% glycerol,pH7.3.
Concentration:	lot specific
Purification:	Affinity purification
Conjugation:	Unconjugated
Storage:	Store at -20°C. Avoid freeze / thaw cycles.
Stability:	Stable for 12 months from date of receipt.
Predicted Protein Size:	16kDa
Gene Name:	histone cluster 3, H3
Database Link:	NP_003484 Entrez Gene 691496 Rat Entrez Gene 8290 Human Q16695



[View online »](#)

Background:

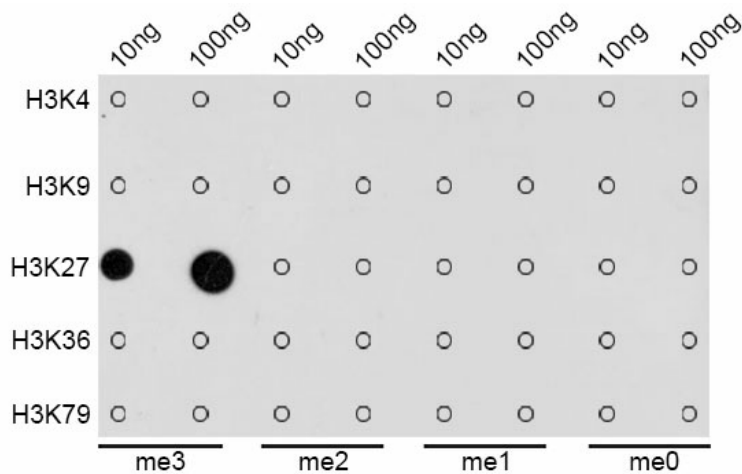
Histones are basic nuclear proteins that are responsible for the nucleosome structure of the chromosomal fiber in eukaryotes. Nucleosomes consist of approximately 146 bp of DNA wrapped around a histone octamer composed of pairs of each of the four core histones (H2A, H2B, H3, and H4). The chromatin fiber is further compacted through the interaction of a linker histone, H1, with the DNA between the nucleosomes to form higher order chromatin structures. This gene is intronless and encodes a replication-dependent histone that is a member of the histone H3 family. Transcripts from this gene lack polyA tails; instead, they contain a palindromic termination element. This gene is located separately from the other H3 genes that are in the histone gene cluster on chromosome 6p22-p21.3.

Synonyms:

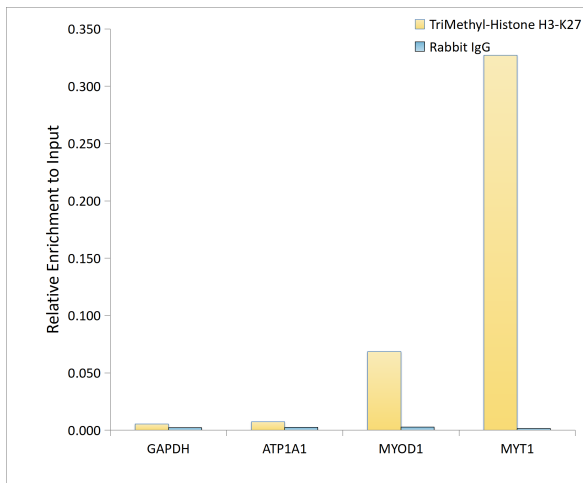
g; H3; H3.4; H3FT; H3t

Protein Pathways:

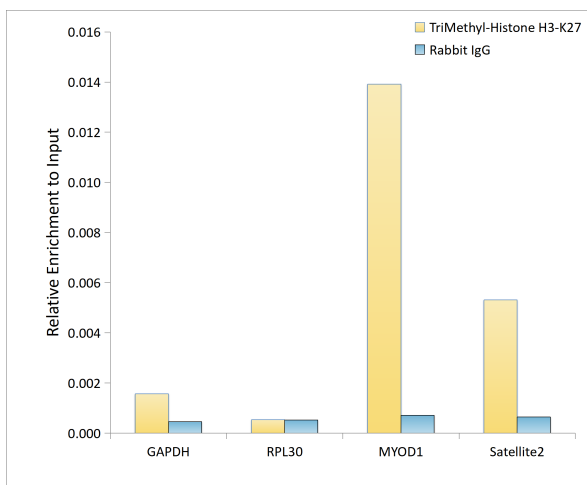
Systemic lupus erythematosus

Product images:


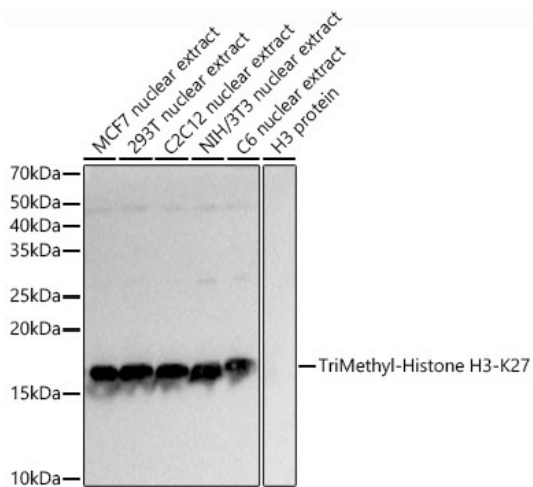
Dot-blot analysis of all sorts of methylation peptides using TriMethyl-Histone H3-K27 antibody (TA327350).



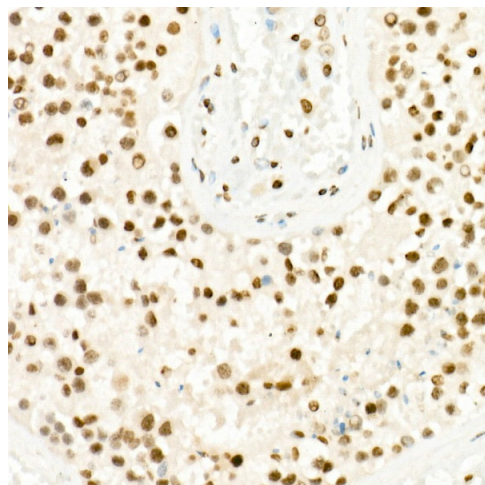
Chromatin immunoprecipitation analysis of extracts of HeLa cells



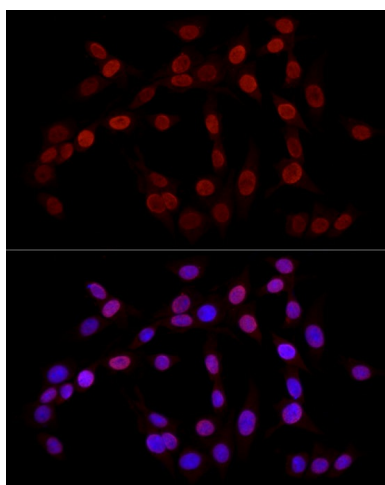
Chromatin immunoprecipitation analysis of extracts of HeLa cells



Western blot analysis of various lysates using TriMethyl-Histone H3-K27 Rabbit pAb (TA327350) at 1:1000 dilution. Secondary antibody: HRP-conjugated Goat anti-Rabbit IgG (H+L) (AS014) at 1:10000 dilution. Lysates/proteins: 25µg per lane. Blocking buffer: 3% nonfat dry milk in TBST. Detection: ECL Basic Kit (RM00020). Exposure time: 0.5s.



Immunohistochemistry analysis of paraffin-embedded Human testis using TriMethyl-Histone H3-K27 Rabbit pAb (TA327350) at dilution of 1:20 (40x lens). High pressure antigen retrieval performed with 0.01M Citrate Bufferr (pH 6.0) prior to IHC staining.



Immunofluorescence analysis of PC-12 cells using TriMethyl-Histone H3-K27 Rabbit pAb (TA327350) at dilution of 1:20 (40x lens). Secondary antibody: Cy3-conjugated Goat anti-Rabbit IgG (H+L) (AS007) at 1:500 dilution. Blue: DAPI for nuclear staining.