

## Product datasheet for **TA327347**

### H3FT (HIST3H3) Rabbit Polyclonal Antibody

#### Product data:

Product Type:	Primary Antibodies
Applications:	ChIP, ChIP-seq, Dot, ICC/IF, IHC, IP, WB
Recommended Dilution:	WB 1:500-1:2000;IF 1:50-1:200;IP 1:50-1:200;ChIP 1:50 - 1:200
Reactivity:	Human, Mouse, Rat, Other (Wide Range)
Host:	Rabbit
Isotype:	IgG
Clonality:	Polyclonal
Immunogen:	A synthetic methylated peptide corresponding to residues surrounding K9 of human histone H3
Formulation:	Store at -20C or -80C. Avoid freeze / thaw cycles. Buffer: PBS with 0.02% sodium azide, 50% glycerol, pH7.3
Concentration:	lot specific
Purification:	Affinity purification
Conjugation:	Unconjugated
Storage:	Store at -20°C as received.
Stability:	Stable for 12 months from date of receipt.
Gene Name:	histone cluster 3, H3
Database Link:	<a href="#">NP_003484</a> <a href="#">Entrez Gene 691496 Rat</a> <a href="#">Entrez Gene 8290 Human</a> <a href="#">Q16695</a>



[View online »](#)

**Background:**

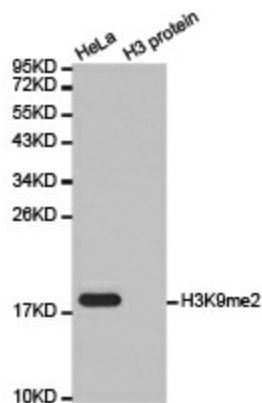
Modulation of chromatin structure plays an important role in the regulation of transcription in eukaryotes. The nucleosome, made up of DNA wound around eight core histone proteins (two each of H2A, H2B, H3, and H4), is the primary building block of chromatin. The amino-terminal tails of core histones undergo various post-translational modifications, including acetylation, phosphorylation, methylation, and ubiquitination. These modifications occur in response to various stimuli and have a direct effect on the accessibility of chromatin to transcription factors and, therefore, gene expression. In most species, histone H2B is primarily acetylated at Lys5, 12, 15, and 20. Histone H3 is primarily acetylated at Lys9, 14, 18, 23, 27, and 56. Acetylation of H3 at Lys9 appears to have a dominant role in histone deposition and chromatin assembly in some organisms. Phosphorylation at Ser10, Ser28, and Thr11 of histone H3 is tightly correlated with chromosome condensation during both mitosis and meiosis. Phosphorylation at Thr3 of histone H3 is highly conserved among many species and is catalyzed by the kinase haspin. Immunostaining with phospho-specific antibodies in mammalian cells reveals mitotic phosphorylation at Thr3 of H3 in prophase and its dephosphorylation during anaphase.

**Synonyms:**

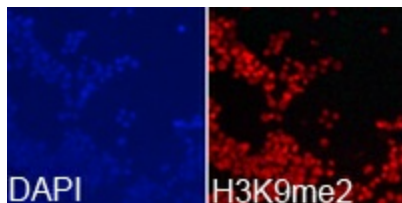
g; H3; H3.4; H3FT; H3t

**Protein Pathways:**

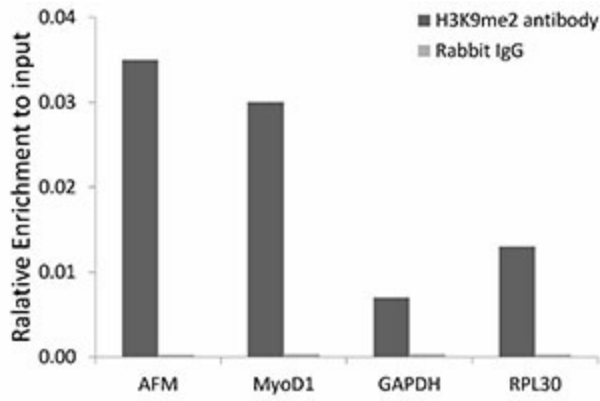
Systemic lupus erythematosus

**Product images:**

Western blot analysis of extracts of HeLa cell line and H3 protein expressed in E.coli., using DiMethyl-Histone H3-K9 antibody.



Immunofluorescence analysis of 293T cell using DiMethyl-Histone H3-K9 antibody. Blue: DAPI for nuclear staining.



Chromatin immunoprecipitation analysis extracts of 293 cell line, using DiMethyl-Histone H3-K9 antibody and rabbit IgG. The amount of immunoprecipitated DNA was checked by quantitative PCR. Histogram was constructed by the ratios of the immunoprecipitated DNA to the input.