

## Product datasheet for **TA327333**

### Epac1 (RAPGEF3) Rabbit Polyclonal Antibody

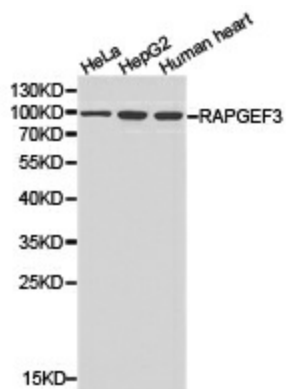
#### Product data:

Product Type:	Primary Antibodies
Applications:	WB
Recommended Dilution:	WB 1:500 - 1:2000
Reactivity:	Human, Mouse
Host:	Rabbit
Isotype:	IgG
Clonality:	Polyclonal
Immunogen:	Recombinant protein of human RAPGEF3
Formulation:	Store at -20C or -80C. Avoid freeze / thaw cycles. Buffer: PBS with 0.02% sodium azide, 50% glycerol, pH7.3
Concentration:	lot specific
Purification:	Affinity purification
Conjugation:	Unconjugated
Storage:	Store at -20°C as received.
Stability:	Stable for 12 months from date of receipt.
Gene Name:	Rap guanine nucleotide exchange factor 3
Database Link:	<a href="#">NP_006096</a> <a href="#">Entrez Gene 223864 Mouse</a> <a href="#">Entrez Gene 10411 Human</a> <a href="#">O95398</a>
Background:	EPAC1 and EPAC2 (exchange proteins activated by cyclic AMP) are guanine nucleotide exchange factors (GEFs) that catalyze the exchange of GDP for GTP, activating Rap1 and Rap2 small GTPases. Rap activation by EPAC is cAMP-dependent and mediates cAMP signaling in part through protein kinase A (PKA). EPAC signaling plays a significant role in a number of cellular processes including migration and focal adhesion formation, exocytosis, insulin signaling, axon growth and guidance and neurotransmitter release.
Synonyms:	bcm910; CAMP-GEFI; EPAC; EPAC1; HSU79275
Protein Pathways:	Leukocyte transendothelial migration, Long-term potentiation



[View online »](#)

## Product images:



Western blot analysis of extracts of various cell lines, using RAPGEF3 antibody.