

## Product datasheet for **TA327332**

### MRP4 (ABCC4) Rabbit Polyclonal Antibody

#### Product data:

Product Type:	Primary Antibodies
Applications:	ICC/IF, IHC, WB
Recommended Dilution:	WB 1:500 - 1:2000
Reactivity:	Human, Mouse, Rat
Host:	Rabbit
Isotype:	IgG
Clonality:	Polyclonal
Immunogen:	Recombinant protein of human ABCC4
Formulation:	Store at -20C or -80C. Avoid freeze / thaw cycles. Buffer: PBS with 0.02% sodium azide, 50% glycerol, pH7.3
Concentration:	lot specific
Purification:	Affinity purification
Conjugation:	Unconjugated
Storage:	Store at -20°C as received.
Stability:	Stable for 12 months from date of receipt.
Gene Name:	ATP binding cassette subfamily C member 4
Database Link:	<a href="#">NP_001098985</a> <a href="#">Entrez Gene 170924 Rat</a> <a href="#">Entrez Gene 239273 Mouse</a> <a href="#">Entrez Gene 10257 Human</a> <a href="#">O15439</a>



[View online »](#)

**Background:**

ABCC4 is a member of the ATP-binding Cassette (ABC) transporter family. ABC proteins transport various molecules across cellular membranes by utilizing the energy generated from ATP hydrolysis. There are seven subfamilies of ABC proteins: ABC1, MDR/TAP, MRP, ALD, OABP, GCN20, and White . ABCC4 belongs to the MRP subfamily, which is involved in multi-drug resistance, hence it is also named MRP4. ABCC4 is widely expressed in cells and tissues including prostate, kidney proximal tubules, astrocytes and capillary endothelial cells of the brain, platelets, and many cancer cell lines . ABCC4 mediates efflux transport of a wide variety of endogenous and xenobiotic organic anionic compounds . The diversity of substrates determines the biological functions of ABCC4. It regulates cAMP levels in human leukemia cells, thereby controlling the proliferation and differentiation of leukemia cells. ABCC4 also enables COX deficient pancreatic cancer cells to obtain exogenous prostagladins . Researchers have shown that ABCC4 expression is elevated in drug resistant cancer cells, which makes it a potential target for cancer therapy . ABCC4 localizes to both plasma membrane and intracellular membranous structures . Investigators have also implicated ABCC4 in the pathogenesis of Kawasaki disease, a genetic childhood disease characterized by vasculitis .

**Synonyms:**

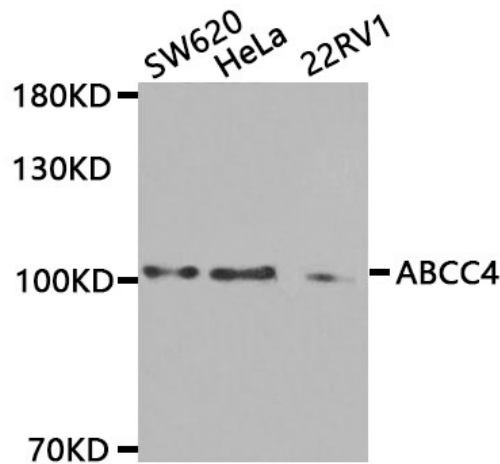
MOAT-B; MOATB; MRP4

**Protein Families:**

Druggable Genome, Ion Channels: Other, Transmembrane

**Protein Pathways:**

ABC transporters

**Product images:**

Western blot analysis of extracts of kidney cell lines, using ABCC4 antibody.