

## Product datasheet for **TA327329**

### UBE2I Rabbit Polyclonal Antibody

#### Product data:

Product Type:	Primary Antibodies
Applications:	ICC/IF, IHC, WB
Recommended Dilution:	WB 1:500 - 1:2000;IF 1:50- 1:200
Reactivity:	Human, Mouse, Rat
Host:	Rabbit
Isotype:	IgG
Clonality:	Polyclonal
Immunogen:	Recombinant protein of human UBE2I
Formulation:	Store at -20C or -80C. Avoid freeze / thaw cycles. Buffer: PBS with 0.02% sodium azide, 50% glycerol, pH7.3
Concentration:	lot specific
Purification:	Affinity purification
Conjugation:	Unconjugated
Storage:	Store at -20°C as received.
Stability:	Stable for 12 months from date of receipt.
Gene Name:	ubiquitin conjugating enzyme E2 I
Database Link:	<a href="#">NP_003336</a> <a href="#">Entrez Gene 22196 Mouse</a> <a href="#">Entrez Gene 25573 Rat</a> <a href="#">Entrez Gene 7329 Human</a> <a href="#">P63279</a>



[View online »](#)

**Background:**

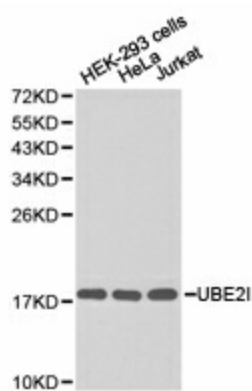
The process of SUMO-1 conjugation is similar to that seen with ubiquitin and other forms of post-translational protein modification. Like ubiquitin, SUMO-1 is conjugated to its target protein by the coordinated action of ubiquitin conjugation enzymes E1, E2 and E3. Ubc9 (or ube2M) is a highly conserved, 158 amino acid protein that acts as a SUMO-1 conjugating enzyme. Ubc9 binds to target proteins through their SUMO-1-CS (consensus sequence) domains and interacts with SUMO via the structurally conserved amino-terminal domain. Localization of Ubc9 to the nucleus and the nuclear envelope allows this enzyme to catalyze target protein sumoylation and regulate target protein nucleocytoplasmic transport and transcriptional activity. Ubc9 target proteins include a host of proteins (RAD51, RAD52, p53 and c-Jun) that regulate the cell cycle, DNA repair, and p53-dependent processes.

**Synonyms:**

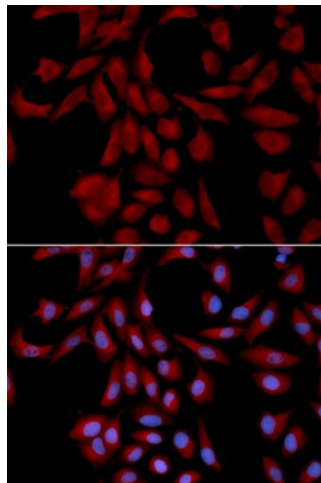
C358B7.1; P18; UBC9

**Protein Pathways:**

Ubiquitin mediated proteolysis

**Product images:**

Western blot analysis of extracts of various cell lines, using UBE2I antibody.



Immunofluorescence analysis of U2OS cell using UBE2I antibody. Blue: DAPI for nuclear staining.