

## Product datasheet for **TA327328**

### CD62E (SELE) Rabbit Polyclonal Antibody

#### Product data:

Product Type:	Primary Antibodies
Applications:	WB
Recommended Dilution:	WB 1:500 - 1:2000
Reactivity:	Human, Mouse, Rat
Host:	Rabbit
Isotype:	IgG
Clonality:	Polyclonal
Immunogen:	Recombinant protein of human SELE
Formulation:	Store at -20C or -80C. Avoid freeze / thaw cycles. Buffer: PBS with 0.02% sodium azide, 50% glycerol, pH7.3
Concentration:	lot specific
Purification:	Affinity purification
Conjugation:	Unconjugated
Storage:	Store at -20°C as received.
Stability:	Stable for 12 months from date of receipt.
Predicted Protein Size:	67 kDa
Gene Name:	selectin E
Database Link:	<a href="#">NP_000441</a> <a href="#">Entrez Gene 20339 Mouse</a> <a href="#">Entrez Gene 25544 Rat</a> <a href="#">Entrez Gene 6401 Human</a> <a href="#">P16581</a>

**Background:** The protein encoded by this gene is found in cytokine-stimulated endothelial cells and is thought to be responsible for the accumulation of blood leukocytes at sites of inflammation by mediating the adhesion of cells to the vascular lining. It exhibits structural features such as the presence of lectin- and EGF-like domains followed by short consensus repeat (SCR) domains that contain 6 conserved cysteine residues. These proteins are part of the selectin family of cell adhesion molecules. Adhesion molecules participate in the interaction between leukocytes and the endothelium and appear to be involved in the pathogenesis of atherosclerosis.



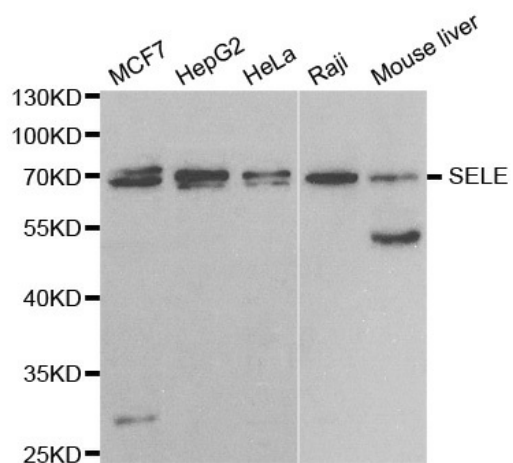
[View online »](#)

**Synonyms:** CD62E; ELAM; ELAM1; ESEL; LECAM2

**Protein Families:** Druggable Genome, Transmembrane

**Protein Pathways:** Cell adhesion molecules (CAMs)

**Product images:**



Western blot analysis of extracts of various cell lines, using SELE antibody.