

## Product datasheet for **TA327324S**

### MEK7 (MAP2K7) Rabbit Polyclonal Antibody

#### Product data:

Product Type:	Primary Antibodies
Applications:	ICC/IF, WB
Recommended Dilution:	WB 1:500 - 1:2000;IF 1:50- 1:200
Reactivity:	Human, Mouse, Rat
Host:	Rabbit
Isotype:	IgG
Clonality:	Polyclonal
Immunogen:	Recombinant protein of human MAP2K7
Formulation:	Store at -20C or -80C. Avoid freeze / thaw cycles. Buffer: PBS with 0.02% sodium azide, 50% glycerol, pH7.3
Concentration:	lot specific
Purification:	Affinity purification
Conjugation:	Unconjugated
Storage:	Store at -20°C as received.
Stability:	Stable for 12 months from date of receipt.
Gene Name:	mitogen-activated protein kinase kinase 7
Database Link:	<a href="#">NP_660186</a> <a href="#">Entrez Gene 26400 Mouse</a> <a href="#">Entrez Gene 363855 Rat</a> <a href="#">Entrez Gene 5609 Human</a> <a href="#">O14733</a>



[View online »](#)

**Background:**

c-Jun NH2-terminal protein kinase (JNK), a distant member of the mitogen-activated protein (MAP) kinase family, regulates gene expression in response to various extracellular stimuli. MKK7, a novel member of the MAP kinase kinase family, was phosphorylated and activated by MEKK1, a MAP kinase kinasekinase in the JNK signaling cascade. MKK7 activity was also stimulated by constitutively active forms of Rac and Cdc42Hs, members of the Rho small GTP-binding protein family. endogenous MKK7 was activated by treatment with the growth factor interleukin-3 (but not interleukin-4), or by ligation of CD40, the B-cell antigen receptor, or the receptor for the Fc fragment of immunoglobulin. MKK7 was also activated when cells were exposed to heat, UV irradiation, anisomycin, hyperosmolarity or the pro-inflammatory cytokine tumor necrosis factor-alpha, suggesting that MKK7 is involved in many physiological pathways.

**Synonyms:**

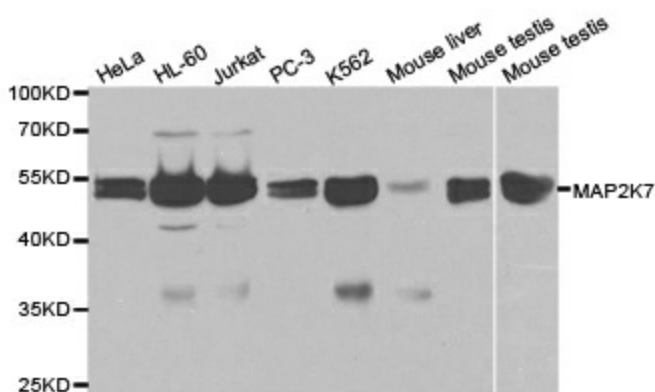
JNKK2; MAPKK7; MEK; MEK 7; MKK7; PRKMK7; SAPKK-4; SAPKK4

**Protein Families:**

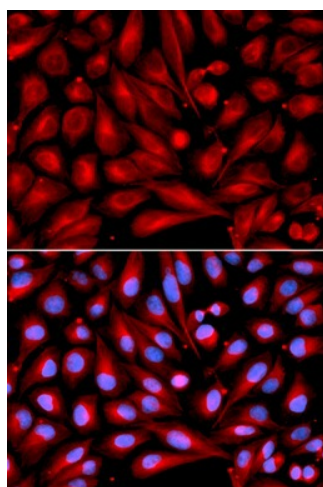
Druggable Genome, Protein Kinase

**Protein Pathways:**

ErbB signaling pathway, Fc epsilon RI signaling pathway, GnRH signaling pathway, MAPK signaling pathway, Neurotrophin signaling pathway, T cell receptor signaling pathway, Toll-like receptor signaling pathway

**Product images:**

Western blot analysis of extracts of various celllines, using MAP2K7 antibody.



Immunofluorescence analysis of U2OS cell using MAP2K7 antibody. Blue: DAPI for nuclear staining.