

Product datasheet for **TA327323S**

PPP2R2A Rabbit Polyclonal Antibody

Product data:

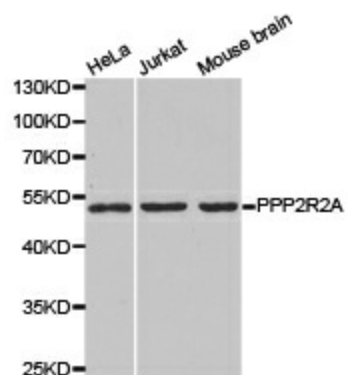
Product Type:	Primary Antibodies
Applications:	IHC, WB
Recommended Dilution:	WB 1:500 - 1:2000
Reactivity:	Human, Mouse, Rat
Host:	Rabbit
Isotype:	IgG
Clonality:	Polyclonal
Immunogen:	Recombinant protein of human PPP2R2A
Formulation:	Store at -20C or -80C. Avoid freeze / thaw cycles. Buffer: PBS with 0.02% sodium azide, 50% glycerol, pH7.3
Concentration:	lot specific
Purification:	Affinity purification
Conjugation:	Unconjugated
Storage:	Store at -20°C as received.
Stability:	Stable for 12 months from date of receipt.
Gene Name:	protein phosphatase 2 regulatory subunit Balpha
Database Link:	NP_002708 Entrez Gene 71978 Mouse Entrez Gene 117104 Rat Entrez Gene 5520 Human P63151
Background:	Protein phosphatase 2A subunit B isoform R2-a (PPP2R2A) is the component of regulatory subunit B of serine/threonine protein phosphatase 2A (PP2A). PPP2R2A belongs to the R2/B55/PR55 family of regulatory subunit B. Evidence suggests that subunit PPP2R2A enhances TGF- β , Activin, and Nodal signaling pathways and may play an important role in cell cycle regulation. PPP2R2A/PP2A, B55-a/PR55-a isoform interacts with the type I TGF- β receptors via unique WD-40 repeats that contribute to the anti-proliferative function of TGF- β receptors.
Synonyms:	B55A; B55ALPHA; PR52A; PR55A
Protein Families:	Druggable Genome, Phosphatase



[View online »](#)

Protein Pathways: Tight junction

Product images:



Western blot analysis of extracts of various cell lines, using PPP2R2A antibody.