

Product datasheet for **TA327322**

PPP1A (PPP1CA) Rabbit Polyclonal Antibody

Product data:

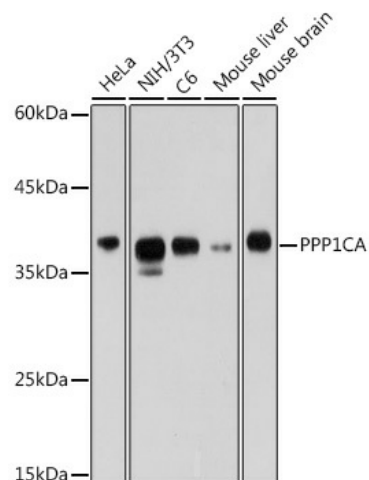
Product Type:	Primary Antibodies
Applications:	IF, IHC, WB
Recommended Dilution:	WB 1:500 - 1:2000;IHC 1:50- 1:200
Reactivity:	Human, Mouse, Rat
Host:	Rabbit
Isotype:	IgG
Clonality:	Polyclonal
Immunogen:	Recombinant protein of human PPP1CA
Formulation:	Store at -20C or -80C. Avoid freeze / thaw cycles. Buffer: PBS with 0.02% sodium azide, 50% glycerol, pH7.3
Concentration:	lot specific
Purification:	Affinity purification
Conjugation:	Unconjugated
Storage:	Store at -20°C as received.
Stability:	Stable for 12 months from date of receipt.
Gene Name:	protein phosphatase 1 catalytic subunit alpha
Database Link:	NP_002699 Entrez Gene 19045 Mouse Entrez Gene 24668 Rat Entrez Gene 5499 Human P62136
Background:	Type 1 protein phosphatase (PP1), a serine/threonine phosphatase, is highly conserved in eukaryotic cells. Four isoforms of PP1 have been characterized:PP1a, PP1d, PP1?1 and PP1?2. Involvement in cell cycle regulation is one of the biological functions of PP1. It has been illustrated that PP1 dephosphorylates Rb and cdc25 during mitosis. A cell cycle-dependent phosphorylation at Thr320 of PP1a by cdc2 kinase inhibits PP1a activity.
Synonyms:	PP-1A; PP1A; PP1alpha; PPP1A
Protein Families:	Druggable Genome, Phosphatase



[View online »](#)

Protein Pathways: Focal adhesion, Insulin signaling pathway, Long-term potentiation, Oocyte meiosis, Regulation of actin cytoskeleton, Vascular smooth muscle contraction

Product images:



Western blot analysis of extracts of various cell lines, using PPP1CA antibody (TA327322) at 1:1000 dilution. | Secondary antibody: HRP Goat Anti-Rabbit IgG (H+L) at 1:10000 dilution. | Lysates/proteins: 25ug per lane. | Blocking buffer: 3% nonfat dry milk in TBST. | Detection: ECL Basic Kit . | Exposure time: 1s.