

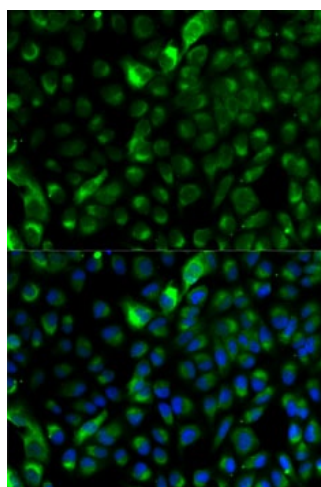
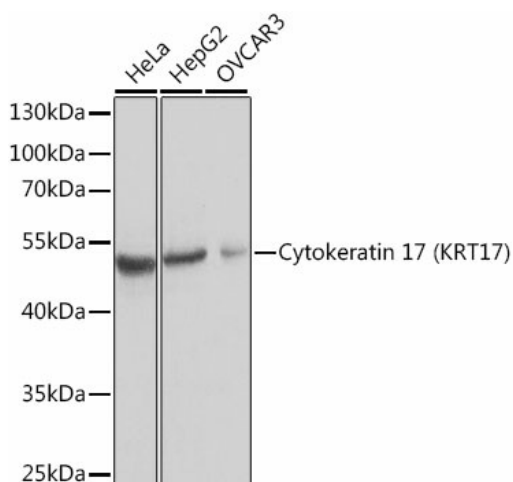
Product datasheet for **TA327315S**

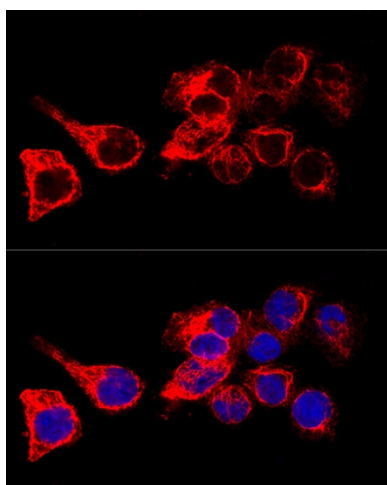
Cytokeratin 17 (KRT17) Rabbit Polyclonal Antibody

Product data:

Product Type:	Primary Antibodies
Applications:	ELISA, ICC/IF, WB
Recommended Dilution:	WB, 1:500 - 1:2000 IF/ICC, 1:20 - 1:100 ELISA, Recommended starting concentration is 1 µg/mL. Please optimize the concentration based on your specific assay requirements.
Reactivity:	Human
Host:	Rabbit
Isotype:	IgG
Clonality:	Polyclonal
Formulation:	Store at -20C or -80C. Avoid freeze / thaw cycles. Buffer: PBS with 0.02% sodium azide, 50% glycerol, pH7.3
Concentration:	lot specific
Purification:	Affinity purification
Conjugation:	Unconjugated
Storage:	Store at -20°C. Avoid freeze / thaw cycles.
Stability:	Stable for 12 months from date of receipt.
Predicted Protein Size:	48kDa
Gene Name:	keratin 17
Database Link:	NP_000413 Entrez Gene 3872 Human Q04695
Background:	This gene encodes the type I intermediate filament chain keratin 17, expressed in nail bed, hair follicle, sebaceous glands, and other epidermal appendages. Mutations in this gene lead to Jackson-Lawler type pachyonychia congenita and steatocystoma multiplex.
Synonyms:	39.1; CK-17; K17; PC; PC2; PCHC1

[View online »](#)

Product images:




Confocal immunofluorescence analysis of HeLa cells using Cytokeratin 17 (KRT17) Rabbit pAb ([TA327315]) at dilution of 1:200. Blue: DAPI for nuclear staining.