

## Product datasheet for **TA327314**

### KCNQ1 Rabbit Polyclonal Antibody

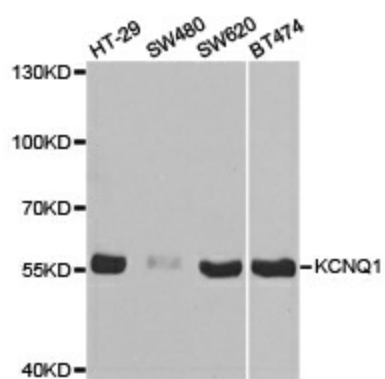
#### Product data:

Product Type:	Primary Antibodies
Applications:	WB
Recommended Dilution:	WB: 1:500-1:2000
Reactivity:	Human, Mouse, Rat
Host:	Rabbit
Isotype:	IgG
Clonality:	Polyclonal
Immunogen:	Recombinant protein of human KCNQ1
Formulation:	Store at -20C or -80C. Avoid freeze / thaw cycles. Buffer: PBS with 0.02% sodium azide, 50% glycerol, pH7.3
Concentration:	lot specific
Purification:	Affinity purification
Conjugation:	Unconjugated
Storage:	Store at -20°C as received.
Stability:	Stable for 12 months from date of receipt.
Gene Name:	potassium voltage-gated channel subfamily Q member 1
Database Link:	<a href="#">NP_000209</a> <a href="#">Entrez Gene 16535 Mouse</a> <a href="#">Entrez Gene 84020 Rat</a> <a href="#">Entrez Gene 3784 Human</a> <a href="#">P51787</a>
Background:	KCNQ1 is a protein for a voltage-gated potassium channel required for the repolarization phase of the cardiac action potential. The gene product can form heteromultimers with two other potassium channel proteins, KCNE1 and KCNE3.
Synonyms:	ATFB1; ATFB3; JLNS1; KCNA8; KCNA9; Kv1.9; Kv7.1; KVLQT1; LQT; LQT1; RWS; SQT2; WRS
Protein Families:	Druggable Genome, Ion Channels: Potassium, Transmembrane
Protein Pathways:	Vibrio cholerae infection



[View online »](#)

## Product images:



Western blot analysis of extracts of various cell lines, using KCNQ1 antibody.