

## Product datasheet for **TA327313S**

### CD18 (ITGB2) Rabbit Polyclonal Antibody

#### Product data:

Product Type:	Primary Antibodies
Applications:	ELISA, ICC/IF, IHC, WB
Recommended Dilution:	WB: 1:500-1:1000; IHC-P, 1:50 - 1:200; IF/ICC, 1:50 - 1:200; ELISA: Recommended starting concentration is 1 µg/mL. Please optimize the concentration based on your specific assay requirements.
Reactivity:	Human, Mouse, Rat
Host:	Rabbit
Isotype:	IgG
Clonality:	Polyclonal
Immunogen:	Recombinant protein of human ITGB2
Formulation:	Store at -20C or -80C. Avoid freeze / thaw cycles. Buffer: PBS with 0.02% sodium azide, 50% glycerol, pH7.3
Concentration:	lot specific
Purification:	Affinity purification
Conjugation:	Unconjugated
Storage:	Store at -20°C as received.
Stability:	Stable for 12 months from date of receipt.
Gene Name:	integrin subunit beta 2
Database Link:	<a href="#">NP_000202</a> <a href="#">Entrez Gene 16414 Mouse</a> <a href="#">Entrez Gene 309684 Rat</a> <a href="#">Entrez Gene 3689 Human</a> <a href="#">P05107</a>



[View online »](#)

**Background:**

In the immune system, integrins have essential roles in leukocyte trafficking and function. These include immune cell attachment to endothelial and antigen-presenting cells, cytotoxicity, and extravasation into tissues. Integrin adhesion receptors transduce signals that control complex cell functions which require the regulation of gene expression, such as proliferation, differentiation and survival. Their intracellular domain has no catalytic function, indicating that interaction with other transducing molecules is crucial for integrin-mediated signaling. JAB1 (Jun activation domain-binding protein 1), a coactivator of the c-Jun transcription factor, has been identified as a protein that interacts with the cytoplasmic domain of the beta2 subunit of the alphaL/beta2 integrin LFA-1. Patients with leukocyte adhesion molecule (CD11/CD18, beta 2 integrins) deficiency have structural defects in the common beta subunit (CD18), which prevent heterodimer formation and normal cell surface expression of these receptors, leading to life-threatening bacterial infections.

**Synonyms:**

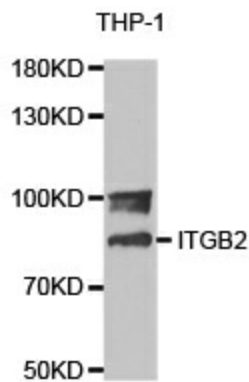
CD18; LAD; LCAMB; LFA-1; MAC-1; MF17; MFI7

**Protein Families:**

Druggable Genome, Transmembrane

**Protein Pathways:**

Cell adhesion molecules (CAMs), Leukocyte transendothelial migration, Natural killer cell mediated cytotoxicity, Regulation of actin cytoskeleton, Viral myocarditis

**Product images:**

Western blot analysis of extracts of THP-1 cell lines, using ITGB2 antibody.