

Product datasheet for **TA327309**

HCLS1 Rabbit Polyclonal Antibody

Product data:

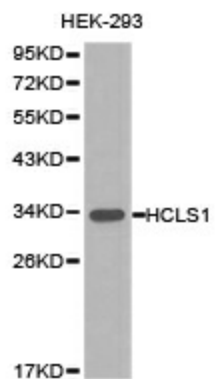
Product Type:	Primary Antibodies
Applications:	IHC, WB
Recommended Dilution:	WB 1:500 - 1:2000
Reactivity:	Human, Mouse
Host:	Rabbit
Isotype:	IgG
Clonality:	Polyclonal
Immunogen:	Recombinant protein of human HCLS1
Formulation:	Store at -20C or -80C. Avoid freeze / thaw cycles. Buffer: PBS with 0.02% sodium azide, 50% glycerol, pH7.3
Concentration:	lot specific
Purification:	Affinity purification
Conjugation:	Unconjugated
Storage:	Store at -20°C as received.
Stability:	Stable for 12 months from date of receipt.
Gene Name:	hematopoietic cell-specific Lyn substrate 1
Database Link:	NP_005326 Entrez Gene 15163 Mouse Entrez Gene 3059 Human P14317
Background:	HS1 (HCLS1, LckBP1, p75) is a protein kinase substrate that is expressed only in tissues and cells of hematopoietic origin. HS1 contains four cortactin repeats and a single SH3 domain. This intracellular protein is phosphorylated following immune receptor activation, which promotes recruitment of HS1 to the immune synapse. Phosphorylation of HS1 is required to regulate actin dynamics and provide docking sites for many other signaling molecules, such as Vav1 and PLC γ 1. HS1 also plays an important role in platelet activation.
Synonyms:	CTTNL; HS1; lckBP1; p75
Protein Families:	Transcription Factors



[View online »](#)

Protein Pathways: Pathogenic Escherichia coli infection, Tight junction

Product images:



Western blot analysis of extracts of HEK-293 cell lines, using HCLS1 antibody.