

Product datasheet for **TA327302**

Caspase 3 (CASP3) Rabbit Polyclonal Antibody

Product data:

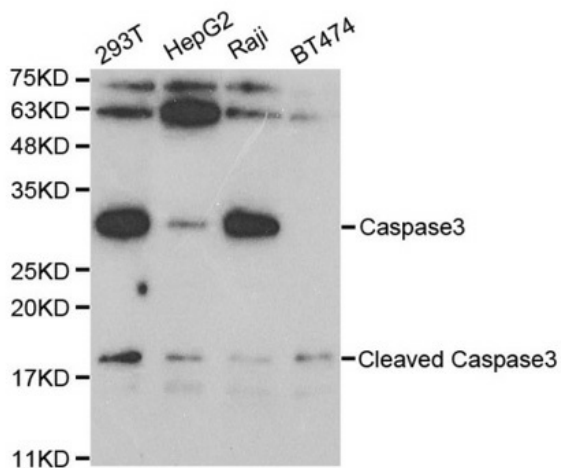
Product Type:	Primary Antibodies
Applications:	ICC/IF, IHC, WB
Recommended Dilution:	WB 1:500 - 1:1000;IF 1:50 - 1:100
Reactivity:	Human, Mouse, Rat
Host:	Rabbit
Isotype:	IgG
Clonality:	Polyclonal
Immunogen:	A synthetic peptide of human CASP3
Formulation:	Store at -20C or -80C. Avoid freeze / thaw cycles. Buffer: PBS with 0.02% sodium azide, 50% glycerol, pH7.3
Concentration:	lot specific
Purification:	Affinity purification
Conjugation:	Unconjugated
Storage:	Store at -20°C as received.
Stability:	Stable for 12 months from date of receipt.
Predicted Protein Size:	32 kDa
Gene Name:	caspase 3
Database Link:	NP_004337 Entrez Gene 12367 MouseEntrez Gene 25402 RatEntrez Gene 836 Human P42574
Background:	Caspase-3 (CPP-32, Apoptain, Yama, SCA-2) is a critical executioner of apoptosis, as it is either partially or totally responsible for the proteolytic cleavage of many key proteins such as the nuclear enzyme poly(ADP-ribose) polymerase (PARP). Activation
Synonyms:	CPP32; CPP32B; SCA-1
Protein Families:	Druggable Genome, ES Cell Differentiation/IPS, Protease



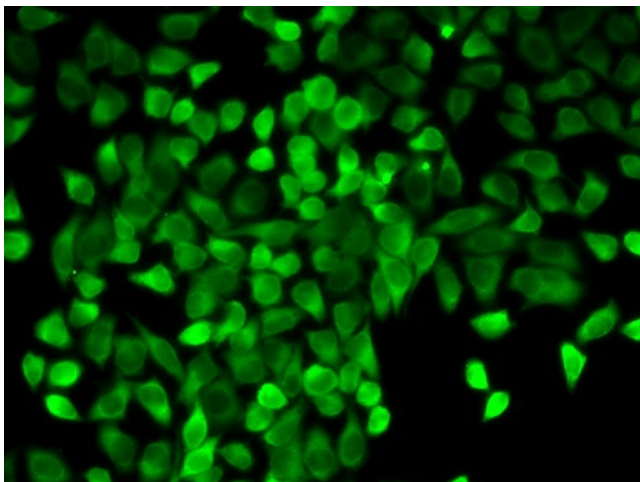
[View online »](#)

Protein Pathways:

Alzheimer's disease, Amyotrophic lateral sclerosis (ALS), Apoptosis, Colorectal cancer, Epithelial cell signaling in Helicobacter pylori infection, Huntington's disease, MAPK signaling pathway, Natural killer cell mediated cytotoxicity, p53 signaling pathway, Parkinson's disease, Pathways in cancer, Viral myocarditis

Product images:


Western blot analysis of extracts of various cell lines, using CASP3 antibody.



Immunofluorescence analysis of A549 cell using CASP3 antibody.