

Product datasheet for **TA327300S**

Piwil1 Rabbit Polyclonal Antibody

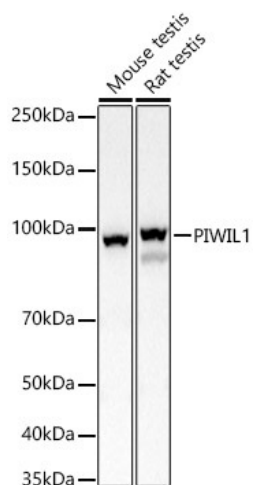
Product data:

Product Type:	Primary Antibodies
Applications:	ELISA, ICC/IF, IHC, WB
Recommended Dilution:	WB, 1:500 - 1:1000 IHC-P, 1:50 - 1:200 IF/ICC, 1:50 - 1:200 ELISA, Recommended starting concentration is 1 µg/mL. Please optimize the concentration based on your specific assay requirements.
Reactivity:	Mouse, Rat, Human
Host:	Rabbit
Isotype:	IgG
Clonality:	Polyclonal
Formulation:	Store at -20C or -80C. Avoid freeze / thaw cycles. Buffer: PBS with 0.02% sodium azide, 50% glycerol, pH7.3
Concentration:	lot specific
Purification:	Affinity purification
Conjugation:	Unconjugated
Storage:	Store at -20°C. Avoid freeze / thaw cycles.
Stability:	Stable for 12 months from date of receipt.
Predicted Protein Size:	99kDa
Gene Name:	piwi-like RNA-mediated gene silencing 1
Database Link:	NP_067286 Entrez Gene 9271 Human Entrez Gene 363912 Rat Entrez Gene 57749 Mouse Q9JMB7
Background:	Enables several functions, including RNA binding activity; mRNA cap binding complex binding activity; and polysome binding activity. Involved in negative regulation of transposition; piRNA metabolic process; and spermatogenesis, exchange of chromosomal proteins. Located in chromatoid body; dense body; and nucleus. Is expressed in genitourinary system. Orthologous to human PIWIL1 (piwi like RNA-mediated gene silencing 1).

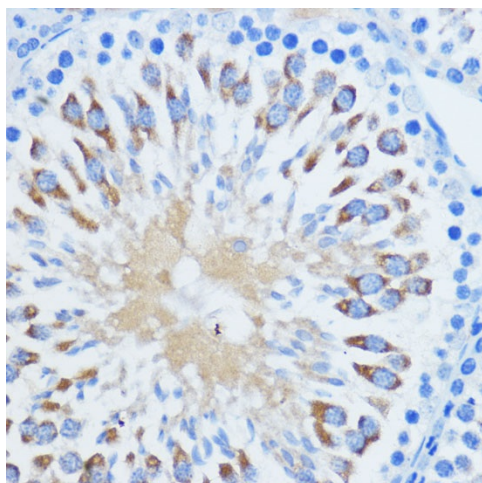

[View online »](#)

Synonyms: HIWI; MIWI; PIWI

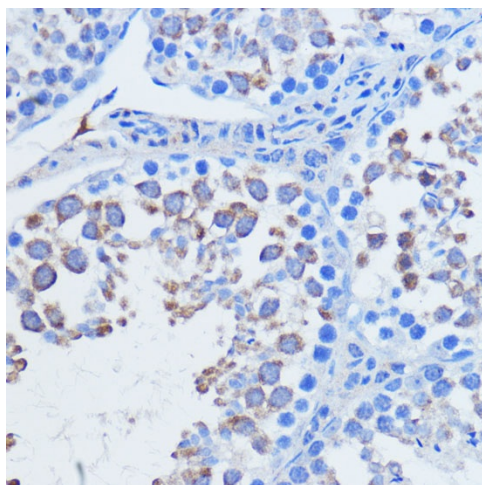
Product images:



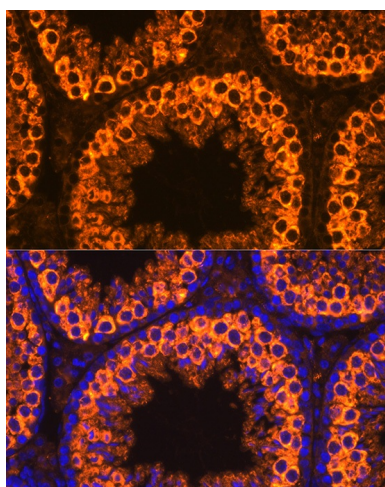
Western blot analysis of various lysates



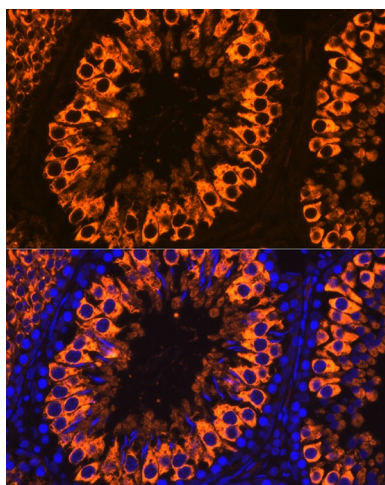
Immunohistochemistry analysis of paraffin-embedded Rat testis using PIWI1 Rabbit pAb ([TA327300]) at dilution of 1:100 (40x lens). Microwave antigen retrieval performed with 0.01M PBS Buffer (pH 7.2) prior to IHC staining.



Immunohistochemistry analysis of paraffin-embedded Mouse testis using PIWIL1 Rabbit pAb ([TA327300]) at dilution of 1:100 (40x lens). Microwave antigen retrieval performed with 0.01M PBS Buffer (pH 7.2) prior to IHC staining.



Immunofluorescence analysis of paraffin-embedded Mouse testis using PIWIL1 Rabbit pAb ([TA327300]) at dilution of 1:100. Secondary antibody: Cy3-conjugated Goat anti-Rabbit IgG (H+L) (AS007) at 1:500 dilution. Blue: DAPI for nuclear staining.



Immunofluorescence analysis of paraffin-embedded Rat testis using PIWIL1 Rabbit pAb ([TA327300]) at dilution of 1:100. Secondary antibody: Cy3-conjugated Goat anti-Rabbit IgG (H+L) (AS007) at 1:500 dilution. Blue: DAPI for nuclear staining.