

## Product datasheet for **TA327300**

### Piwi1 Rabbit Polyclonal Antibody

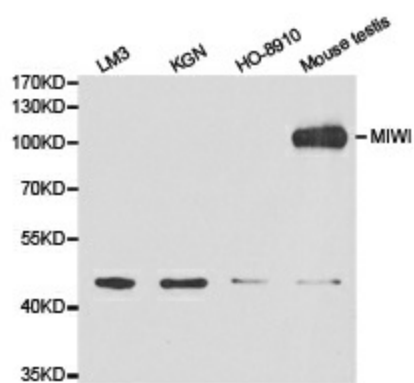
#### Product data:

Product Type:	Primary Antibodies
Applications:	ICC/IF, IHC, WB
Recommended Dilution:	WB: 1:500-1:2000;IF: 1:20-1:100
Reactivity:	Mouse, Rat, Human
Host:	Rabbit
Isotype:	IgG
Clonality:	Polyclonal
Immunogen:	Recombinant protein of mouse MIWI
Formulation:	Store at -20C or -80C. Avoid freeze / thaw cycles. Buffer: PBS with 0.02% sodium azide, 50% glycerol, pH7.3
Concentration:	lot specific
Purification:	Affinity purification
Conjugation:	Unconjugated
Storage:	Store at -20°C as received.
Stability:	Stable for 12 months from date of receipt.
Gene Name:	piwi-like RNA-mediated gene silencing 1
Database Link:	<a href="#">NP_067286</a> <a href="#">Entrez Gene 9271 Human</a> <a href="#">Entrez Gene 363912 Rat</a> <a href="#">Entrez Gene 57749 Mouse</a> <a href="#">Q9JMB7</a>
Background:	The Drosophila piwi gene was identified as being required for the self-renewal of germline stem cells. Piwi homologs are well conserved among various species including Arabidopsis, C. elegans, and Homo sapiens. Both Miwi and Mili proteins are mouse homologs of Piwi and contain a C-terminal Piwi domain. Miwi and Mili bind to Piwi-interacting RNAs (piRNAs) in male germ cells and are essential for spermatogenesis in mice.
Synonyms:	HIWI; MIWI; PIWI



[View online »](#)

## Product images:



Western blot analysis of extracts of various cell lines, using MIWI antibody.