

## Product datasheet for **TA327299**

### SPINLW1 (EPPIN) Rabbit Polyclonal Antibody

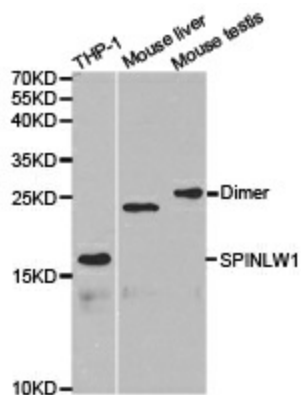
#### Product data:

Product Type:	Primary Antibodies
Applications:	WB
Recommended Dilution:	WB 1:500 - 1:2000
Reactivity:	Human, Mouse, Rat
Host:	Rabbit
Isotype:	IgG
Clonality:	Polyclonal
Immunogen:	Recombinant protein of human SPINLW1
Formulation:	PBS with 0.09% Sodium azide, 50% glycerol, pH 7.3.
Concentration:	lot specific
Purification:	Affinity purification
Conjugation:	Unconjugated
Storage:	Store at -20°C as received.
Stability:	Stable for 12 months from date of receipt.
Gene Name:	epididymal peptidase inhibitor
Database Link:	<a href="#">NP_065131</a> <a href="#">Entrez Gene 75526 Mouse</a> <a href="#">Entrez Gene 685161 Rat</a> <a href="#">Entrez Gene 57119 Human</a> <a href="#">O95925</a>
Background:	This gene encodes an epididymal protease inhibitor, which contains both kunitz-type and WAP-type four-disulfide core (WFDC) protease inhibitor consensus sequences. Most WFDC genes are localized to chromosome 20q12-q13 in two clusters: centromeric and telomeric. This gene is a member of the WFDC gene family and belongs to the telomeric cluster. The protein can inhibit human sperm motility, and polymorphisms in this gene are associated with male infertility. Read-through transcription also exists between this gene and the downstream WFDC6 (WAP four-disulfide core domain 6) gene. [provided by RefSeq, Nov 2010]
Synonyms:	CT71; CT72; dj461P17.2; SPINLW1; WAP7; WFDC7
Protein Families:	Secreted Protein



[View online »](#)

## Product images:



Western blot analysis of extracts of various cell lines, using SPINLW1 antibody.