

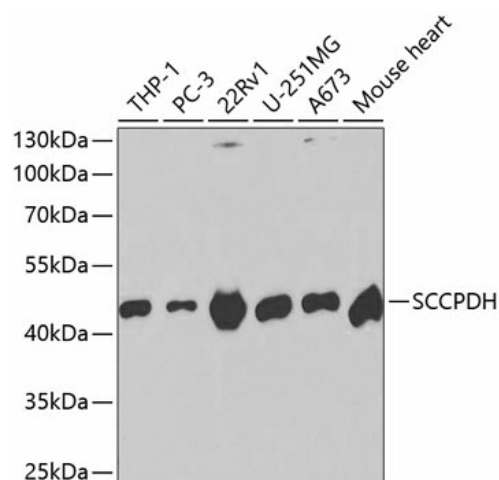
## Product datasheet for TA327298S

### SCCPDH Rabbit Polyclonal Antibody

#### Product data:

Product Type:	Primary Antibodies
Applications:	ELISA, WB
Recommended Dilution:	WB, 1:500 - 1:2000 ELISA, Recommended starting concentration is 1 µg/mL. Please optimize the concentration based on your specific assay requirements.
Reactivity:	Human, Mouse
Host:	Rabbit
Isotype:	IgG
Clonality:	Polyclonal
Formulation:	Store at -20C or -80C. Avoid freeze / thaw cycles. Buffer: PBS with 0.02% sodium azide, 50% glycerol, pH7.3
Concentration:	lot specific
Purification:	Affinity purification
Conjugation:	Unconjugated
Storage:	Store at -20°C. Avoid freeze / thaw cycles.
Stability:	Stable for 12 months from date of receipt.
Predicted Protein Size:	47kDa
Gene Name:	saccharopine dehydrogenase (putative)
Database Link:	<a href="#">NP_057086</a> <a href="#">Entrez Gene 109232 Mouse</a> <a href="#">Entrez Gene 51097 Human</a> <a href="#">Q8NBX0</a>
Background:	Predicted to enable oxidoreductase activity. Predicted to be involved in glycolipid biosynthetic process. Located in lipid droplet and midbody.
Synonyms:	CGI-49; NET11
Protein Families:	Transmembrane


[View online »](#)

**Product images:**


Western blot analysis of various lysates using SCCPDH Rabbit pAb (TA327298) at 1:1000 dilution.

Secondary antibody: HRP-conjugated Goat anti-Rabbit IgG (H+L) (AS014) at 1:10000 dilution.

Lysates/proteins: 25µg per lane.

Blocking buffer: 3% nonfat dry milk in TBST.