

Product datasheet for **TA327285S**

CD90 (THY1) Rabbit Polyclonal Antibody

Product data:

Product Type:	Primary Antibodies
Applications:	ICC/IF, WB
Recommended Dilution:	WB 1:500 - 1:2000
Reactivity:	Human, Mouse
Host:	Rabbit
Isotype:	IgG
Clonality:	Polyclonal
Immunogen:	A synthetic peptide of human THY1
Formulation:	Store at -20C or -80C. Avoid freeze / thaw cycles. Buffer: PBS with 0.02% sodium azide, 50% glycerol, pH7.3
Concentration:	lot specific
Purification:	Affinity purification
Conjugation:	Unconjugated
Storage:	Store at -20°C as received.
Stability:	Stable for 12 months from date of receipt.
Predicted Protein Size:	18 kDa
Gene Name:	Thy-1 cell surface antigen
Database Link:	NP_006279 Entrez Gene 21838 Mouse Entrez Gene 7070 Human P04216



[View online »](#)

Background:

Thy1 is a GPI-anchored, developmentally regulated protein involved in various signaling cascades that mediate neurite outgrowth, T cell activation, tumor suppression, apoptosis, and fibrosis. It is highly expressed on the surface of adult neurons and is thought to play a role in modulating adhesive and migratory events, such as neurite extension. Decreased Thy1 expression is associated with the development of epithelial ovarian cancer, revealing its role as a putative tumor suppressor gene of human ovarian cancer. Thy1 knockout mice have impaired cutaneous immune responses and abnormal retinal development. Thy1 is epigenetically regulated, or deregulated in some disease states, such as pulmonary fibrosis. The potentially reversible hypermethylation of the Thy1 promoter offers the possibility of novel therapeutic options in this disease.

Synonyms:

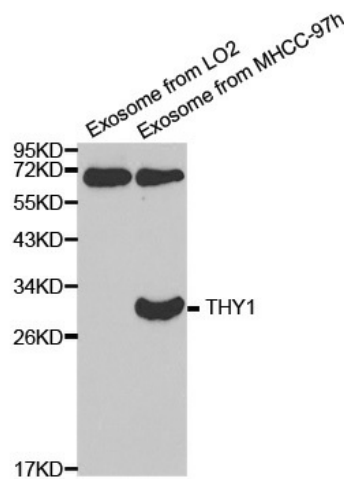
CD90; CDw90

Protein Families:

ES Cell Differentiation/IPS

Protein Pathways:

Leukocyte transendothelial migration

Product images:

Western blot analysis of extracts of exosome from various cell lines, using THY1 antibody.