

Product datasheet for **TA327284**

LKB1 (STK11) Rabbit Polyclonal Antibody

Product data:

| | |
|-----------------------|--|
| Product Type: | Primary Antibodies |
| Applications: | ICC/IF, IHC, WB |
| Recommended Dilution: | WB 1:500 - 1:2000;IF 1:50- 1:200 |
| Reactivity: | Human, Mouse, Rat |
| Host: | Rabbit |
| Isotype: | IgG |
| Clonality: | Polyclonal |
| Immunogen: | Recombinant protein of human STK11 |
| Formulation: | Store at -20C or -80C. Avoid freeze / thaw cycles. Buffer: PBS with 0.02% sodium azide, 50% glycerol, pH7.3 |
| Concentration: | lot specific |
| Purification: | Affinity purification |
| Conjugation: | Unconjugated |
| Storage: | Store at -20°C as received. |
| Stability: | Stable for 12 months from date of receipt. |
| Gene Name: | serine/threonine kinase 11 |
| Database Link: | NP_000446 Entrez Gene 20869 Mouse Entrez Gene 314621 Rat Entrez Gene 6794 Human Q15831 |



[View online »](#)

Background:

LKB1 (STK11) is a serine/threonine kinase and tumor suppressor that helps control cell structure, apoptosis and energy homeostasis through regulation of numerous downstream kinases . A cytosolic protein complex comprised of LKB1, putative kinase STRAD, and the MO25 scaffold protein, activates both AMP-activated protein kinase (AMPK) and several AMPK-related kinases . AMPK plays a predominant role as the master regulator of cellular energy homeostasis, controlling downstream effectors that regulate cell growth and apoptosis in response to cellular ATP concentrations . LKB1 appears to be phosphorylated in cells at several sites, including human LKB1 at Ser31/325/428 and Thr189/336/363 .Mutation in the corresponding LKB1 gene causes Peutz-Jeghers syndrome (PJS), an autosomal dominant disorder characterized by benign GI tract polyps and dark skin lesions of the mouth, hands and feet . A variety of other LKB1 gene mutations have been associated with the formation of sporadic cancers in several tissues.

Synonyms:

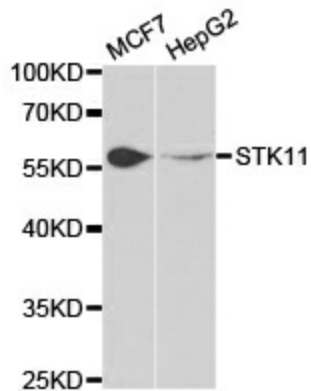
hLKB1; LKB1; PJS

Protein Families:

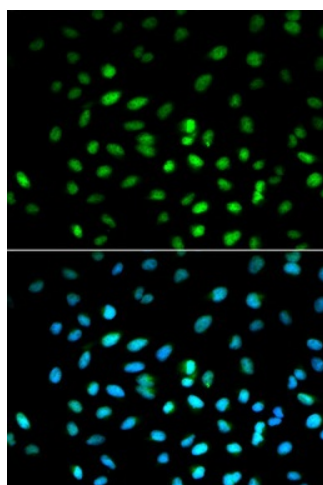
Druggable Genome, Protein Kinase

Protein Pathways:

Adipocytokine signaling pathway, mTOR signaling pathway

Product images:

Western blot analysis of extracts of various cell lines, using STK11 antibody.



Immunofluorescence analysis of MCF7 cell using STK11 antibody. Blue: DAPI for nuclear staining.