

Product datasheet for TA327273S

Pyrophosphatase 1 (PPA1) Rabbit Polyclonal Antibody

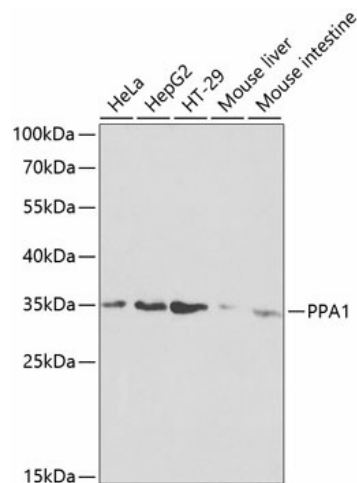
Product data:

Product Type:	Primary Antibodies
Applications:	ELISA, WB
Recommended Dilution:	WB, 1:500 - 1:2000 ELISA, Recommended starting concentration is 1 µg/mL. Please optimize the concentration based on your specific assay requirements.
Reactivity:	Human, Mouse, Rat
Host:	Rabbit
Isotype:	IgG
Clonality:	Polyclonal
Formulation:	Store at -20C or -80C. Avoid freeze / thaw cycles. Buffer: PBS with 0.02% sodium azide, 50% glycerol, pH7.3
Concentration:	lot specific
Purification:	Affinity purification
Conjugation:	Unconjugated
Storage:	Store at -20°C. Avoid freeze / thaw cycles.
Stability:	Stable for 12 months from date of receipt.
Predicted Protein Size:	33kDa
Gene Name:	pyrophosphatase (inorganic) 1
Database Link:	NP_066952 Entrez Gene 67895 Mouse Entrez Gene 294504 Rat Entrez Gene 5464 Human Q15181
Background:	The protein encoded by this gene is a member of the inorganic pyrophosphatase (PPase) family. PPases catalyze the hydrolysis of pyrophosphate to inorganic phosphate, which is important for the phosphate metabolism of cells. Studies of a similar protein in bovine suggested a cytoplasmic localization of this enzyme.
Synonyms:	HEL-S-66p; IOPPP; PP; PP1; SID6-8061
Protein Families:	ES Cell Differentiation/IPS


[View online »](#)

Protein Pathways: Oxidative phosphorylation

Product images:



Western blot analysis of various lysates using PPA1 Rabbit pAb (TA327273S) at 1:1000 dilution. Secondary antibody: HRP-conjugated Goat anti-Rabbit IgG (H+L) (AS014) at 1:10000 dilution. Lysates/proteins: 25µg per lane. Blocking buffer: 3% nonfat dry milk in TBST.