

Product datasheet for **TA327271**

PIN1 Rabbit Polyclonal Antibody

Product data:

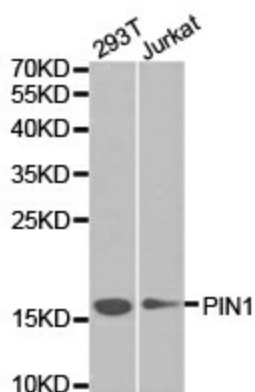
Product Type:	Primary Antibodies
Applications:	WB
Recommended Dilution:	WB 1:500 - 1:2000
Reactivity:	Human, Mouse, Rat
Host:	Rabbit
Isotype:	IgG
Clonality:	Polyclonal
Immunogen:	Recombinant protein of human PIN1
Formulation:	Store at -20C or -80C. Avoid freeze / thaw cycles. Buffer: PBS with 0.02% sodium azide, 50% glycerol, pH7.3
Concentration:	lot specific
Purification:	Affinity purification
Conjugation:	Unconjugated
Storage:	Store at -20°C as received.
Stability:	Stable for 12 months from date of receipt.
Gene Name:	peptidylprolyl cis/trans isomerase, NIMA-interacting 1
Database Link:	NP_006212 Entrez Gene 23988 Mouse Entrez Gene 298696 Rat Entrez Gene 5300 Human Q13526
Background:	Pin1, a member of the parvulin family of peptidyl-prolyl isomerases (PPlase), has been implicated in the G2/M transition of the mammalian cell cycle. Pin1 is a small (18 kDa) protein with two distinct functional domains: an amino-terminal WW domain and a carboxy-terminal PPlase domain. Pin1 interacts with several mitotic phosphoproteins, including Plk1, cdc25C and cdc27, and is thought to act as a phosphorylation-dependent PPlase for these target molecules.
Synonyms:	DOD; UBL5
Protein Families:	Druggable Genome



[View online »](#)

Protein Pathways: RIG-I-like receptor signaling pathway

Product images:



Western blot analysis of extracts of various cell lines, using PIN1 antibody.