

Product datasheet for **TA327266S**

CD51 (ITGAV) Rabbit Polyclonal Antibody

Product data:

Product Type:	Primary Antibodies
Applications:	IHC, IP, WB
Recommended Dilution:	WB: 1:500-1:2000
Reactivity:	Human, Mouse, Rat
Host:	Rabbit
Isotype:	IgG
Clonality:	Polyclonal
Immunogen:	A synthetic peptide of human ITGAV
Formulation:	PBS with 0.09% Sodium azide, 50% glycerol, pH 7.3.
Concentration:	lot specific
Purification:	Affinity purification
Conjugation:	Unconjugated
Storage:	Store at -20°C as received.
Stability:	Stable for 12 months from date of receipt.
Gene Name:	integrin subunit alpha V
Database Link:	NP_002201 Entrez Gene 16410 Mouse Entrez Gene 296456 Rat Entrez Gene 3685 Human P06756

Background: Integrins are α/β heterodimeric cell surface receptors that play a pivotal role in cell adhesion and migration, as well as in growth and survival. The integrin family contains at least 18 α and 8 β subunits that form 24 known integrins with distinct tissue distribution and overlapping ligand specificities. Integrins not only transmit signals to cells in response to the extracellular environment (outside-in signaling), but also sense intracellular cues to alter their interaction with extracellular environment (inside-out signaling). Several αV subfamily members, including $\alpha V\beta 3$, $\alpha V\beta 5$, $\alpha V\beta 1$, are highly expressed in active endothelial cells and cancer cells where they play a critical role in angiogenesis and tumor metastasis. Therefore, interest has focused on αV integrin as a key therapeutic target in the treatment of cancer.

Synonyms: CD51; MSK8; VNRA; VTNR

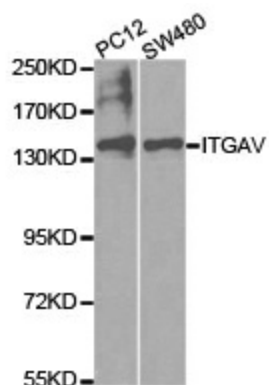


[View online »](#)

Protein Families: Druggable Genome, ES Cell Differentiation/IPS, Transmembrane

Protein Pathways: Arrhythmogenic right ventricular cardiomyopathy (ARVC), Cell adhesion molecules (CAMs), Dilated cardiomyopathy, ECM-receptor interaction, Focal adhesion, Hypertrophic cardiomyopathy (HCM), Pathways in cancer, Regulation of actin cytoskeleton, Small cell lung cancer

Product images:



Western blot analysis of extracts of various cell lines, using ITGAV antibody.