

Product datasheet for **TA327264**

IKK beta (IKBKB) Rabbit Polyclonal Antibody

Product data:

Product Type:	Primary Antibodies
Applications:	IHC, WB
Recommended Dilution:	WB 1:500 - 1:2000
Reactivity:	Human, Mouse, Rat
Host:	Rabbit
Isotype:	IgG
Clonality:	Polyclonal
Immunogen:	A synthetic peptide of human IKBKB
Formulation:	Store at -20C or -80C. Avoid freeze / thaw cycles. Buffer: PBS with 0.02% sodium azide, 50% glycerol, pH7.3
Concentration:	lot specific
Purification:	Affinity purification
Conjugation:	Unconjugated
Storage:	Store at -20°C as received.
Stability:	Stable for 12 months from date of receipt.
Gene Name:	inhibitor of kappa light polypeptide gene enhancer in B-cells, kinase beta
Database Link:	NP_001547 Entrez Gene 16150 Mouse Entrez Gene 84351 Rat Entrez Gene 3551 Human O14920
Background:	The NF- κ B/Rel transcription factors are present in the cytosol in an inactive state, complexed with the inhibitory I κ B proteins. Most agents that activate NF- κ B do so through a common pathway based on phosphorylation-induced, proteasome-mediated degradation of I κ B. The key regulatory step in this pathway involves activation of a high molecular weight I κ B kinase (IKK) complex whose catalysis is generally carried out by three tightly associated IKK subunits. IKK α and IKK β serve as the catalytic subunits of the kinase and IKK γ serves as the regulatory subunit. Activation of IKK depends upon phosphorylation at Ser177 and Ser181 in the activation loop of IKK β (Ser176 and Ser180 in IKK α), which causes conformational changes, resulting in kinase activation.



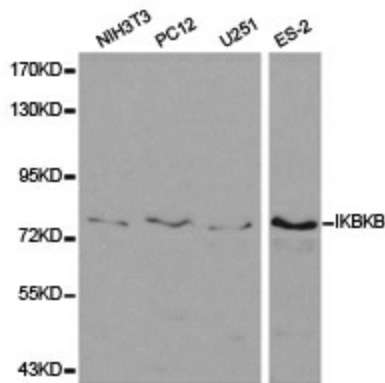
[View online »](#)

Synonyms: IKK-beta; IKK2; IKKB; IMD15; NFKBIKB

Protein Families: Druggable Genome, Protein Kinase, Transcription Factors

Protein Pathways: Acute myeloid leukemia, Adipocytokine signaling pathway, Apoptosis, B cell receptor signaling pathway, Chemokine signaling pathway, Chronic myeloid leukemia, Cytosolic DNA-sensing pathway, Epithelial cell signaling in Helicobacter pylori infection, Insulin signaling pathway, MAPK signaling pathway, Neurotrophin signaling pathway, NOD-like receptor signaling pathway, Pancreatic cancer, Pathways in cancer, Prostate cancer, RIG-I-like receptor signaling pathway, Small cell lung cancer, T cell receptor signaling pathway, Toll-like receptor signaling pathway, Type II diabetes mellitus

Product images:



Western blot analysis of extracts of various cell lines, using IKBKB antibody.