

Product datasheet for **TA327258S**

FGR Rabbit Polyclonal Antibody

Product data:

Product Type:	Primary Antibodies
Applications:	IHC, WB
Recommended Dilution:	WB: 1:500-1:2000
Reactivity:	Human, Mouse
Host:	Rabbit
Isotype:	IgG
Clonality:	Polyclonal
Immunogen:	A synthetic peptide of human FGR
Formulation:	Store at -20C or -80C. Avoid freeze / thaw cycles. Buffer: PBS with 0.02% sodium azide, 50% glycerol, pH7.3
Concentration:	lot specific
Purification:	Affinity purification
Conjugation:	Unconjugated
Storage:	Store at -20°C as received.
Stability:	Stable for 12 months from date of receipt.
Gene Name:	FGR proto-oncogene, Src family tyrosine kinase
Database Link:	NP_005239 Entrez Gene 14191 Mouse Entrez Gene 2268 Human P09769



[View online »](#)

Background:

Fgr is a member of the Src tyrosine kinase family. It has a membrane-associated amino-terminal domain that is highly divergent from other family members, internal conserved SH2 and SH3 domains and a highly conserved carboxy-terminal tyrosine kinase catalytic domain. Tyrosine 412 is located in the activation loop, and phosphorylation of this residue is critical for the activation of Fgr tyrosine kinase activity. c-Fgr is predominantly expressed in cells of hematopoietic origin including differentiated myeloid cells, NK and B cells. Fgr plays an important role in the signaling cascade from membrane receptors lacking intrinsic tyrosine kinase activity such as Bcr, FcR, and the integrin family of receptors. It was demonstrated that Fgr functions as a selective inhibitor of beta2 integrin-mediated signaling and Syk kinase function in monocytes.

Synonyms:

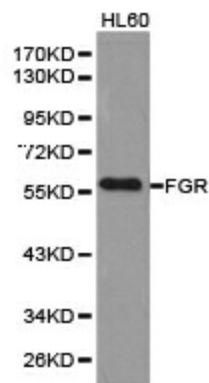
c-fgr; c-src2; p55-Fgr; p55c-fgr; p58-Fgr; p58c-fgr; SRC2

Protein Families:

Druggable Genome, Protein Kinase

Protein Pathways:

Chemokine signaling pathway

Product images:

Western blot analysis of extracts of HL60 cell lines, using FGR antibody.