

Product datasheet for **TA327250**

IKK alpha (CHUK) Rabbit Polyclonal Antibody

Product data:

Product Type:	Primary Antibodies
Applications:	ICC/IF, IHC, IP, WB
Recommended Dilution:	WB 1:500 - 1:2000;IF 1:50- 1:200;IP 1:20- 1:100
Reactivity:	Human, Mouse, Rat
Host:	Rabbit
Isotype:	IgG
Clonality:	Polyclonal
Immunogen:	A synthetic peptide of human CHUK
Formulation:	Store at -20C or -80C. Avoid freeze / thaw cycles. Buffer: PBS with 0.02% sodium azide, 50% glycerol, pH7.3
Concentration:	lot specific
Purification:	Affinity purification
Conjugation:	Unconjugated
Storage:	Store at -20°C as received.
Stability:	Stable for 12 months from date of receipt.
Gene Name:	conserved helix-loop-helix ubiquitous kinase
Database Link:	NP_001269 Entrez Gene 12675 Mouse Entrez Gene 309361 Rat Entrez Gene 1147 Human Q15111

Background: The NF- κ B/Rel transcription factors are present in the cytosol in an inactive state, complexed with the inhibitory I κ B proteins. Most agents that activate NF- κ B do so through a common pathway based on phosphorylation-induced, proteasome-mediated degradation of I κ B. The key regulatory step in this pathway involves activation of a high molecular weight I κ B kinase (IKK) complex whose catalysis is generally carried out by three tightly associated IKK subunits. IKK α and IKK β serve as the catalytic subunits of the kinase and IKK γ serves as the regulatory subunit. Activation of IKK depends upon phosphorylation at Ser177 and Ser181 in the activation loop of IKK β (Ser176 and Ser180 in IKK α), which causes conformational changes, resulting in kinase activation.



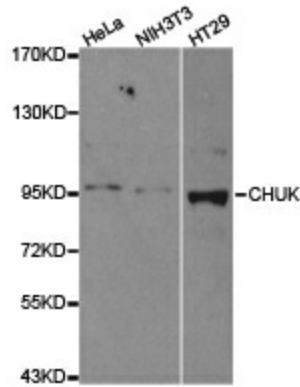
[View online »](#)

Synonyms: IKBKA; IKK-alpha; IKK1; IKKA; NFKBIKA; TCF16

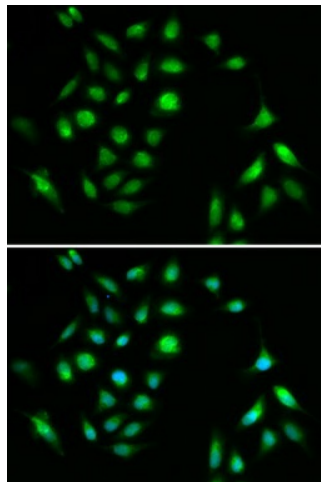
Protein Families: Druggable Genome, Protein Kinase

Protein Pathways: Acute myeloid leukemia, Adipocytokine signaling pathway, Apoptosis, B cell receptor signaling pathway, Chemokine signaling pathway, Chronic myeloid leukemia, Cytosolic DNA-sensing pathway, Epithelial cell signaling in Helicobacter pylori infection, MAPK signaling pathway, NOD-like receptor signaling pathway, Pancreatic cancer, Pathways in cancer, Prostate cancer, RIG-I-like receptor signaling pathway, Small cell lung cancer, T cell receptor signaling pathway, Toll-like receptor signaling pathway

Product images:



Western blot analysis of extracts of various cell lines, using CHUK antibody.



Immunofluorescence analysis of A549 cell using CHUK antibody. Blue: DAPI for nuclear staining.