

## Product datasheet for **TA327249S**

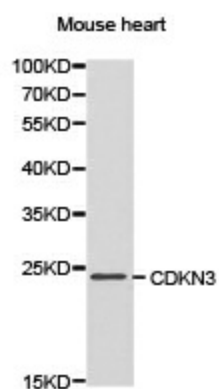
### CDKN3 Rabbit Polyclonal Antibody

#### Product data:

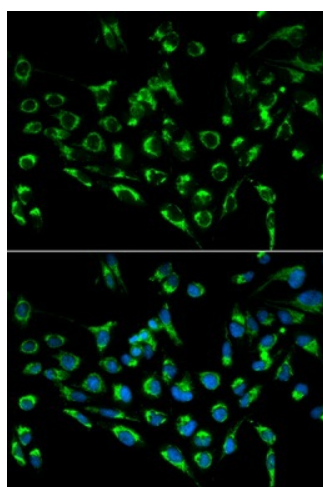
Product Type:	Primary Antibodies
Applications:	ICC/IF, IHC, WB
Recommended Dilution:	WB 1:500 - 1:2000;IF 1:50- 1:200
Reactivity:	Human, Mouse
Host:	Rabbit
Isotype:	IgG
Clonality:	Polyclonal
Immunogen:	Recombinant protein of human CDKN3
Formulation:	Store at -20C or -80C. Avoid freeze / thaw cycles. Buffer: PBS with 0.02% sodium azide, 50% glycerol, pH7.3
Concentration:	lot specific
Purification:	Affinity purification
Conjugation:	Unconjugated
Storage:	Store at -20°C as received.
Stability:	Stable for 12 months from date of receipt.
Gene Name:	cyclin-dependent kinase inhibitor 3
Database Link:	<a href="#">NP_005183</a> <a href="#">Entrez Gene 72391 Mouse</a> <a href="#">Entrez Gene 1033 Human</a> <a href="#">Q16667</a>
Background:	The protein encoded by this gene belongs to the dual specificity protein phosphatase family. It was identified as a cyclin-dependent kinase inhibitor, and has been shown to interact with, and dephosphorylate CDK2 kinase, thus prevent the activation of CDK2 kinase. This gene was reported to be deleted, mutated, or overexpressed in several kinds of cancers. Alternatively spliced transcript variants encoding different isoforms have been found for this gene. [provided by RefSeq, Aug 2008]
Synonyms:	CDI1; CIP2; KAP; KAP1
Protein Families:	Druggable Genome, Phosphatase



[View online »](#)

**Product images:**

Western blot analysis of extracts of mouse heart cell line, using CDKN3 antibody.



Immunofluorescence analysis of MCF7 cell using CDKN3 antibody. Blue: DAPI for nuclear staining.