

Product datasheet for **TA327248S**

CD33 Rabbit Polyclonal Antibody

Product data:

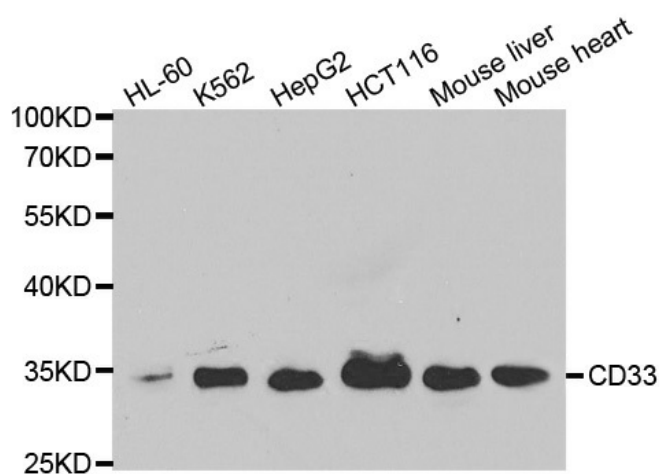
Product Type:	Primary Antibodies
Applications:	ICC/IF, IHC, WB
Recommended Dilution:	WB 1:500 - 1:2000
Reactivity:	Human, Mouse, Rat
Host:	Rabbit
Isotype:	IgG
Clonality:	Polyclonal
Immunogen:	Recombinant protein of human CD33
Formulation:	Store at -20C or -80C. Avoid freeze / thaw cycles. Buffer: PBS with 0.02% sodium azide, 50% glycerol, pH7.3
Concentration:	lot specific
Purification:	Affinity purification
Conjugation:	Unconjugated
Storage:	Store at -20°C as received.
Stability:	Stable for 12 months from date of receipt.
Predicted Protein Size:	40 kDa
Gene Name:	CD33 molecule
Database Link:	NP_001763 Entrez Gene 12489 MouseEntrez Gene 690492 RatEntrez Gene 945 Human P20138
Background:	CD33 is a type I transmembrane glycoprotein that is found on granulocyte and macrophage precursors in the bone marrow, but is absent from pluripotent stem cells. CD33 is also expressed on monocytes in peripheral blood. It is used as a marker to distinguish myelogenous leukemia cells from lymphoid or erythroid leukemias. CD33 may function as a sialic acid-dependent cell adhesion molecule.
Synonyms:	p67; SIGLEC-3; SIGLEC3
Protein Families:	Druggable Genome, Transmembrane



[View online »](#)

Protein Pathways: Hematopoietic cell lineage

Product images:



Western blot analysis of extracts of various cell lines, using CD33 antibody.