

Product datasheet for **TA327247S**

CD247 Rabbit Polyclonal Antibody

Product data:

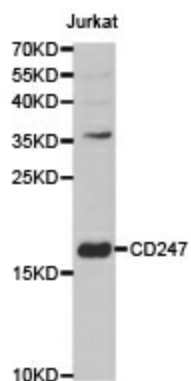
Product Type:	Primary Antibodies
Applications:	ICC/IF, IHC, WB
Recommended Dilution:	WB 1:500 - 1:2000;IF 1:50- 1:200
Reactivity:	Human, Mouse, Rat
Host:	Rabbit
Isotype:	IgG
Clonality:	Polyclonal
Immunogen:	Recombinant protein of human CD247
Formulation:	Store at -20C or -80C. Avoid freeze / thaw cycles. Buffer: PBS with 0.02% sodium azide, 50% glycerol, pH7.3
Concentration:	lot specific
Purification:	Affinity purification
Conjugation:	Unconjugated
Storage:	Store at -20°C as received.
Stability:	Stable for 12 months from date of receipt.
Gene Name:	CD247 molecule
Database Link:	NP_000725 Entrez Gene 12503 Mouse Entrez Gene 25300 Rat Entrez Gene 919 Human P20963
Background:	The protein encoded by this gene is T-cell receptor zeta, which together with T-cell receptor alpha/beta and gamma/delta heterodimers, and with CD3-gamma, -delta and -epsilon, forms the T-cell receptor-CD3 complex. The zeta chain plays an important role in coupling antigen recognition to several intracellular signal-transduction pathways. Low expression of the antigen results in impaired immune response. Two alternatively spliced transcript variants encoding distinct isoforms have been found for this gene. [provided by RefSeq, Jul 2008]
Synonyms:	CD3-ZETA; CD3H; CD3Q; CD3Z; IMD25; T3Z; TCRZ
Protein Families:	Druggable Genome, Transmembrane



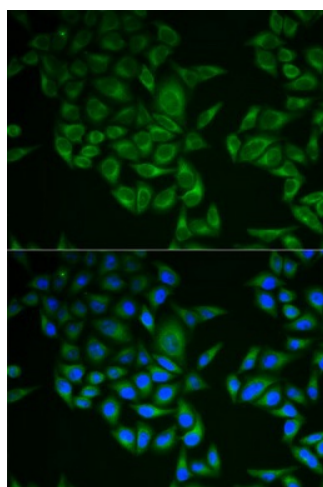
[View online »](#)

Protein Pathways: Natural killer cell mediated cytotoxicity, T cell receptor signaling pathway

Product images:



Western blot analysis of extracts of Jurkat cell line, using CD247 antibody.



Immunofluorescence analysis of A549 cell using CD247 antibody. Blue: DAPI for nuclear staining.