

## Product datasheet for **TA327244**

### CAPZA2 Rabbit Polyclonal Antibody

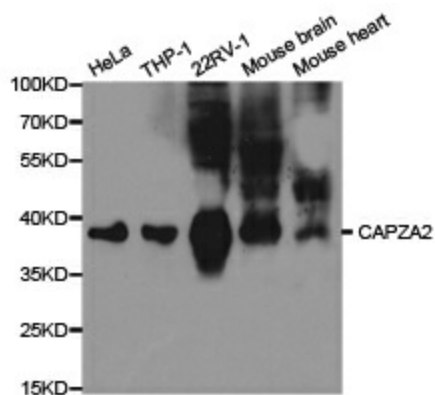
#### Product data:

Product Type:	Primary Antibodies
Applications:	IHC, WB
Recommended Dilution:	WB 1:500 - 1:2000
Reactivity:	Human, Mouse
Host:	Rabbit
Isotype:	IgG
Clonality:	Polyclonal
Immunogen:	Recombinant protein of human CAPZA2
Formulation:	Store at -20C or -80C. Avoid freeze / thaw cycles. Buffer: PBS with 0.02% sodium azide, 50% glycerol, pH7.3
Concentration:	lot specific
Purification:	Affinity purification
Conjugation:	Unconjugated
Storage:	Store at -20°C as received.
Stability:	Stable for 12 months from date of receipt.
Gene Name:	capping actin protein of muscle Z-line alpha subunit 2
Database Link:	<a href="#">NP_006127</a> <a href="#">Entrez Gene 12343 Mouse</a> <a href="#">Entrez Gene 830 Human</a> <a href="#">P47755</a>
Background:	The protein encoded by this gene is a member of the F-actin capping protein alpha subunit family. It is the alpha subunit of the barbed-end actin binding protein Cap Z. By capping the barbed end of actin filaments, Cap Z regulates the growth of the actin filaments at the barbed end. [provided by RefSeq, Jul 2008]
Synonyms:	CAPPA2; CAPZ



[View online »](#)

## Product images:



Western blot analysis of extracts of various cell lines, using CAPZA2 antibody.