

Product datasheet for **TA327241S**

GRK3 Rabbit Polyclonal Antibody

Product data:

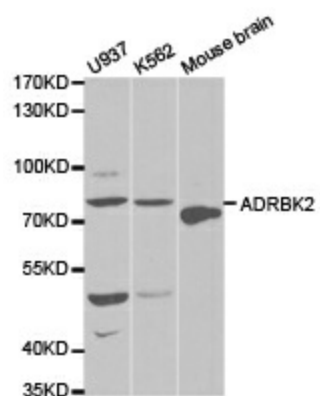
Product Type:	Primary Antibodies
Applications:	IHC, WB
Recommended Dilution:	WB: 1:500-1:2000
Reactivity:	Human, Mouse, Rat
Host:	Rabbit
Isotype:	IgG
Clonality:	Polyclonal
Immunogen:	Recombinant protein of human ADRBK2
Formulation:	Store at -20C or -80C. Avoid freeze / thaw cycles. Buffer: PBS with 0.02% sodium azide, 50% glycerol, pH7.3
Concentration:	lot specific
Purification:	Affinity purification
Conjugation:	Unconjugated
Storage:	Store at -20°C as received.
Stability:	Stable for 12 months from date of receipt.
Gene Name:	G protein-coupled receptor kinase 3
Database Link:	NP_005151 Entrez Gene 25372 Rat Entrez Gene 320129 Mouse Entrez Gene 157 Human P35626
Background:	The beta-adrenergic receptor kinase specifically phosphorylates the agonist-occupied form of the beta-adrenergic and related G protein-coupled receptors. Overall, the beta adrenergic receptor kinase 2 has 85% amino acid similarity with beta adrenergic receptor kinase 1, with the protein kinase catalytic domain having 95% similarity. These data suggest the existence of a family of receptor kinases which may serve broadly to regulate receptor function. [provided by RefSeq, Jul 2008]
Synonyms:	ADRBK2; BARK2
Protein Families:	Druggable Genome, Protein Kinase



[View online »](#)

Protein Pathways: Chemokine signaling pathway, Endocytosis, Olfactory transduction

Product images:



Western blot analysis of extracts of various cell lines, using ADRBK2 antibody.