

Product datasheet for **TA327236S**

PCK1 Rabbit Polyclonal Antibody

Product data:

Product Type:	Primary Antibodies
Applications:	ELISA, ICC/IF, IP, WB
Recommended Dilution:	WB, 1:500 - 1:1000 IF/ICC, 1:50 - 1:200 IP, 0.5µg-4µg antibody for 400µg-600µg extracts of whole cells ELISA, Recommended starting concentration is 1 µg/mL. Please optimize the concentration based on your specific assay requirements.
Reactivity:	Human, Mouse, Rat
Host:	Rabbit
Isotype:	IgG
Clonality:	Polyclonal
Formulation:	Store at -20C or -80C. Avoid freeze / thaw cycles. Buffer: PBS with 0.02% sodium azide, 50% glycerol, pH7.3
Concentration:	lot specific
Purification:	Affinity purification
Conjugation:	Unconjugated
Storage:	Store at -20°C. Avoid freeze / thaw cycles.
Stability:	Stable for 12 months from date of receipt.
Predicted Protein Size:	69kDa
Gene Name:	phosphoenolpyruvate carboxykinase 1
Database Link:	NP_002582 Entrez Gene 18534 Mouse Entrez Gene 362282 Rat Entrez Gene 5105 Human P35558



[View online »](#)

Background:

This gene is a main control point for the regulation of gluconeogenesis. The cytosolic enzyme encoded by this gene, along with GTP, catalyzes the formation of phosphoenolpyruvate from oxaloacetate, with the release of carbon dioxide and GDP. The expression of this gene can be regulated by insulin, glucocorticoids, glucagon, cAMP, and diet. Defects in this gene are a cause of cytosolic phosphoenolpyruvate carboxykinase deficiency. A mitochondrial isozyme of the encoded protein also has been characterized.

Synonyms:

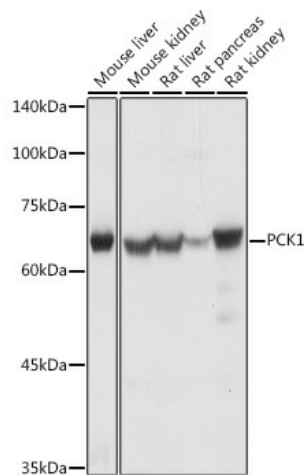
PEPCK-C; PEPCK1; PEPCKC

Protein Families:

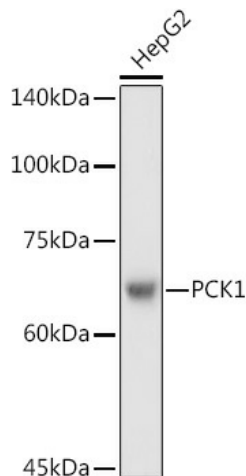
Druggable Genome

Protein Pathways:

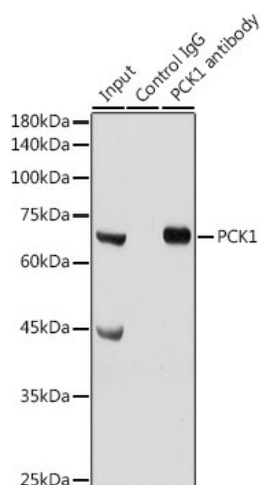
Adipocytokine signaling pathway, Citrate cycle (TCA cycle), Glycolysis / Gluconeogenesis, Insulin signaling pathway, Metabolic pathways, PPAR signaling pathway, Pyruvate metabolism

Product images:


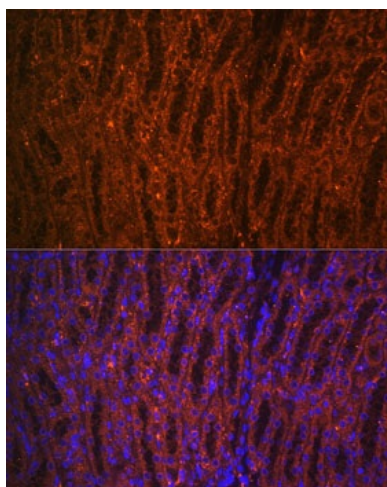
Western blot analysis of various lysates using PCK1 Rabbit pAb (TA327236) at 1:1000 dilution. Secondary antibody: HRP-conjugated Goat anti-Rabbit IgG (H+L) (AS014) at 1:10000 dilution. Lysates/proteins: 25µg per lane. Blocking buffer: 3% nonfat dry milk in TBST. Detection: ECL Basic Kit (RM00020). Exposure time: 1s.



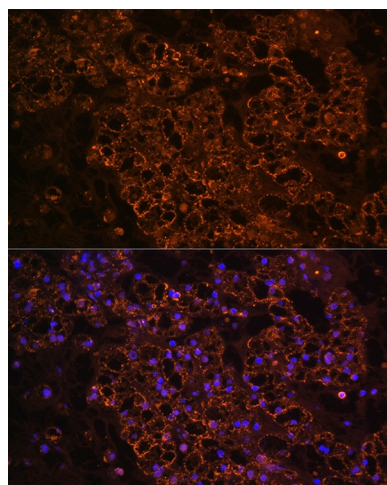
Western blot analysis of lysates from HepG2 cells



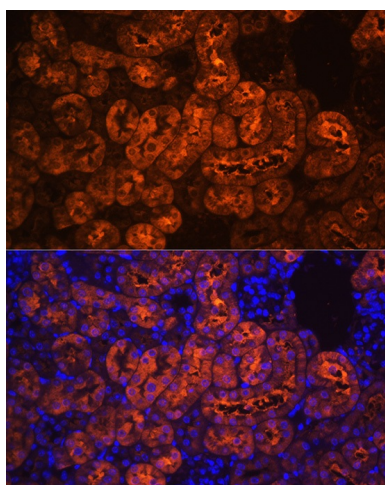
Immunoprecipitation analysis of 300 µg extracts of Mouse liver cells using 3 µg PCK1 antibody ([TA327236]). Western blot was performed from the immunoprecipitate using PCK1 antibody ([TA327236]) at a dilution of 1:1000.



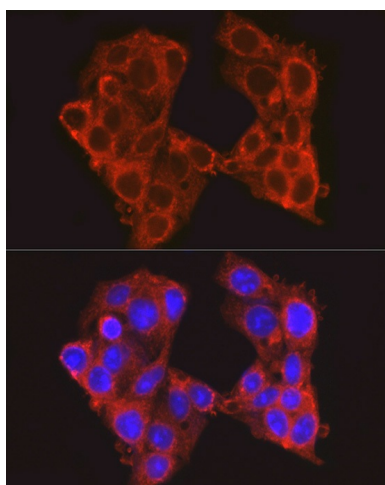
Immunofluorescence analysis of paraffin-embedded rat kidney using PCK1 Rabbit pAb ([TA327236]) at dilution of 1:100 (40x lens). Secondary antibody: Cy3-conjugated Goat anti-Rabbit IgG (H+L) (AS007) at 1:500 dilution. Blue: DAPI for nuclear staining.



Immunofluorescence analysis of paraffin-embedded human kidney cancer using PCK1 Rabbit pAb ([TA327236]) at dilution of 1:100 (40x lens). Secondary antibody: Cy3-conjugated Goat anti-Rabbit IgG (H+L) (AS007) at 1:500 dilution. Blue: DAPI for nuclear staining.



Immunofluorescence analysis of paraffin-embedded mouse kidney using PCK1 Rabbit pAb ([TA327236]) at dilution of 1:100 (40x lens). Secondary antibody: Cy3-conjugated Goat anti-Rabbit IgG (H+L) (AS007) at 1:500 dilution. Blue: DAPI for nuclear staining.



Immunofluorescence analysis of HepG2 cells using PCK1 Rabbit pAb ([TA327236]) at dilution of 1:100 (40x lens). Secondary antibody: Cy3-conjugated Goat anti-Rabbit IgG (H+L) (AS007) at 1:500 dilution. Blue: DAPI for nuclear staining.