

## Product datasheet for **TA327235S**

### Claudin 7 (CLDN7) Rabbit Polyclonal Antibody

#### Product data:

Product Type:	Primary Antibodies
Applications:	WB
Recommended Dilution:	WB 1:500 - 1:2000
Reactivity:	Human, Mouse, Rat
Host:	Rabbit
Isotype:	IgG
Clonality:	Polyclonal
Immunogen:	Recombinant protein of human CLDN7
Formulation:	Store at -20C or -80C. Avoid freeze / thaw cycles. Buffer: PBS with 0.02% sodium azide, 50% glycerol, pH7.3
Concentration:	lot specific
Purification:	Affinity purification
Conjugation:	Unconjugated
Storage:	Store at -20°C as received.
Stability:	Stable for 12 months from date of receipt.
Gene Name:	claudin 7
Database Link:	<a href="#">NP_001298</a> <a href="#">Entrez Gene 53624 Mouse</a> <a href="#">Entrez Gene 65132 Rat</a> <a href="#">Entrez Gene 1366 Human</a> <a href="#">O95471</a>

**Background:** This gene encodes a member of the claudin family. Claudins are integral membrane proteins and components of tight junction strands. Tight junction strands serve as a physical barrier to prevent solutes and water from passing freely through the paracellular space between epithelial or endothelial cell sheets, and also play critical roles in maintaining cell polarity and signal transductions. Differential expression of this gene has been observed in different types of malignancies, including breast cancer, ovarian cancer, hepatocellular carcinomas, urinary tumors, prostate cancer, lung cancer, head and neck cancers, thyroid carcinomas, etc.. Alternatively spliced transcript variants encoding different isoforms have been found. [provided by RefSeq, May 2010]



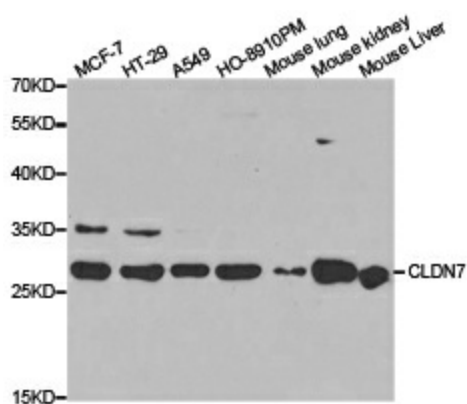
[View online »](#)

**Synonyms:** CEPTRL2; claudin-1; CLDN-7; CPETRL2; Hs.84359

**Protein Families:** Transmembrane

**Protein Pathways:** Cell adhesion molecules (CAMs), Leukocyte transendothelial migration, Tight junction

**Product images:**



Western blot analysis of extracts of various cell lines, using CLDN7 antibody.