

Product datasheet for **TA327232**

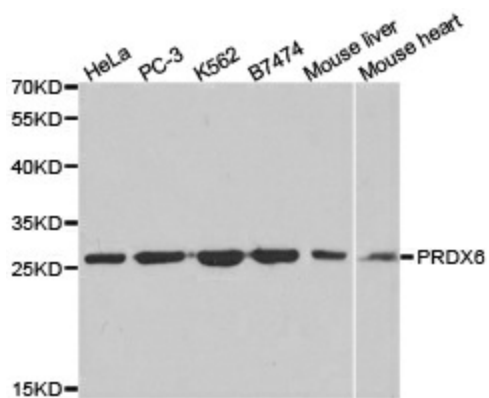
Peroxiredoxin 6 (PRDX6) Rabbit Polyclonal Antibody

Product data:

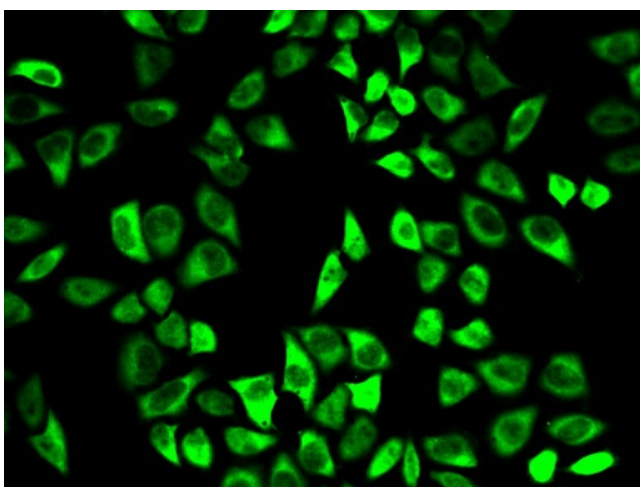
Product Type:	Primary Antibodies
Applications:	ICC/IF, IHC, WB
Recommended Dilution:	WB 1:500 - 1:2000;IF 1:50- 1:200
Reactivity:	Human, Mouse, Rat
Host:	Rabbit
Isotype:	IgG
Clonality:	Polyclonal
Immunogen:	Recombinant protein of human PRDX6
Formulation:	Store at -20C or -80C. Avoid freeze / thaw cycles. Buffer: PBS with 0.02% sodium azide, 50% glycerol, pH7.3
Concentration:	lot specific
Purification:	Affinity purification
Conjugation:	Unconjugated
Storage:	Store at -20°C as received.
Stability:	Stable for 12 months from date of receipt.
Gene Name:	peroxiredoxin 6
Database Link:	NP_004896 Entrez Gene 11758 Mouse Entrez Gene 94167 Rat Entrez Gene 9588 Human P30041
Background:	Prdx6(Peroxiredoxin-6) , a unique member of the peroxiredoxin family of antioxidants, is highly expressed in liver and protects cells from oxidative damage by reducing H2O2 and various lipid Peroxides.It is also named as AOP2, KIAA0106. It can form a dimer.PRDX6 is expressed in all major organs, with a particularly high level in lung.This antibody is specific to PRDX6.
Synonyms:	1-Cys; aiPLA2; AOP2; HEL-S-128m; NSGPx; p29; PRX
Protein Families:	Druggable Genome
Protein Pathways:	Metabolic pathways, Methane metabolism, Phenylalanine metabolism



[View online »](#)

Product images:

Western blot analysis of extracts of various cell lines, using PRDX6 antibody.



Immunofluorescence analysis of HeLa cell using PRDX6 antibody.