

Product datasheet for **TA327223S**

TNFRSF14 Rabbit Polyclonal Antibody

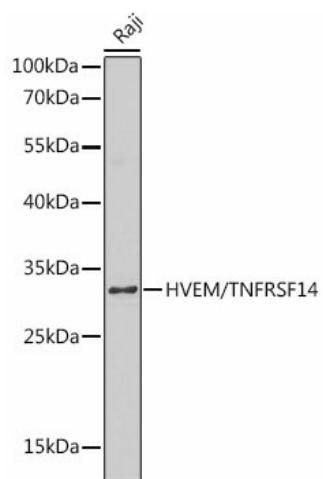
Product data:

| | |
|-------------------------|---|
| Product Type: | Primary Antibodies |
| Applications: | ELISA, WB |
| Recommended Dilution: | WB, 1:500 - 1:2000 ELISA, Recommended starting concentration is 1 µg/mL. Please optimize the concentration based on your specific assay requirements. |
| Reactivity: | Human |
| Host: | Rabbit |
| Isotype: | IgG |
| Clonality: | Polyclonal |
| Formulation: | Store at -20C or -80C. Avoid freeze / thaw cycles. Buffer: PBS with 0.02% sodium azide, 50% glycerol, pH7.3 |
| Concentration: | lot specific |
| Purification: | Affinity purification |
| Conjugation: | Unconjugated |
| Storage: | Store at -20°C. Avoid freeze / thaw cycles. |
| Stability: | Stable for 12 months from date of receipt. |
| Predicted Protein Size: | 30kDa |
| Gene Name: | tumor necrosis factor receptor superfamily member 14 |
| Database Link: | NP_003811 Entrez Gene 8764 Human Q92956 |
| Background: | This gene encodes a member of the TNF (tumor necrosis factor) receptor superfamily. The encoded protein functions in signal transduction pathways that activate inflammatory and inhibitory T-cell immune response. It binds herpes simplex virus (HSV) viral envelope glycoprotein D (gD), mediating its entry into cells. Alternative splicing results in multiple transcript variants. |
| Synonyms: | ATAR; CD270; HVEA; HVEM; LIGHTR; TR2 |
| Protein Families: | Druggable Genome, Transmembrane |


[View online »](#)

Protein Pathways: Cytokine-cytokine receptor interaction

Product images:



Western blot analysis of lysates from Raji cells