

## Product datasheet for TA327222

### PGK1 Rabbit Polyclonal Antibody

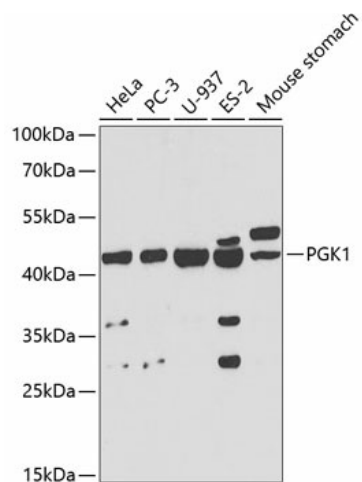
#### Product data:

Product Type:	Primary Antibodies
Applications:	IF, WB
Recommended Dilution:	WB 1:500 - 1:2000
Reactivity:	Human, Mouse, Rat
Host:	Rabbit
Isotype:	IgG
Clonality:	Polyclonal
Immunogen:	Recombinant protein of human PGK1
Formulation:	Store at -20C or -80C. Avoid freeze / thaw cycles. Buffer: PBS with 0.02% sodium azide, 50% glycerol, pH7.3
Concentration:	lot specific
Purification:	Affinity purification
Conjugation:	Unconjugated
Storage:	Store at -20°C as received.
Stability:	Stable for 12 months from date of receipt.
Gene Name:	phosphoglycerate kinase 1
Database Link:	<a href="#">NP_000282</a> <a href="#">Entrez Gene 18655 Mouse</a> <a href="#">Entrez Gene 24644 Rat</a> <a href="#">Entrez Gene 5230 Human</a> <a href="#">P00558</a>
Background:	The PGK1 gene encodes phosphoglycerate kinase-1, also known as ATP:3-phosphoglycerate 1-phosphotransferase (EC 2.7.2.3), which catalyzes the reversible conversion of 1,3-diphosphoglycerate to 3-phosphoglycerate during glycolysis, generating one molecule of ATP. It belongs to the phosphoglycerate kinase family and defects in PGK1 are the cause of phosphoglycerate kinase 1 deficiency (PGK1D).
Synonyms:	HEL-S-68p; MIG10; PGKA
Protein Families:	Druggable Genome
Protein Pathways:	Glycolysis / Gluconeogenesis, Metabolic pathways



[View online »](#)

## Product images:



Western blot analysis of extracts of various cell lines, using PGK1 antibody (TA327222) at 1:1000 dilution. | Secondary antibody: HRP Goat Anti-Rabbit IgG (H+L) at 1:10000 dilution. | Lysates/proteins: 25ug per lane. | Blocking buffer: 3% nonfat dry milk in TBST.