

Product datasheet for **TA327221**

TRIM21 Rabbit Polyclonal Antibody

Product data:

Product Type:	Primary Antibodies
Applications:	ICC/IF, IHC, IP, WB
Recommended Dilution:	WB 1:500 - 1:2000;IF 1:10 - 1:100
Reactivity:	Human, Mouse, Rat
Host:	Rabbit
Isotype:	IgG
Clonality:	Polyclonal
Immunogen:	Recombinant protein of human TRIM21
Formulation:	Store at -20C or -80C. Avoid freeze / thaw cycles. Buffer: PBS with 0.02% sodium azide, 50% glycerol, pH7.3
Concentration:	lot specific
Purification:	Affinity purification
Conjugation:	Unconjugated
Storage:	Store at -20°C as received.
Stability:	Stable for 12 months from date of receipt.
Predicted Protein Size:	54 kDa
Gene Name:	tripartite motif containing 21
Database Link:	NP_003132 Entrez Gene 20821 MouseEntrez Gene 308901 RatEntrez Gene 6737 Human P19474
Background:	TRIM21 has multiple N-terminal zinc finger motifs(has E3 ligase activity), a central leucine zipper, and a potential N-glycosylation site. TRIM3 is a E3 ubiquitin-protein ligase. It can form a ubiquitin ligase complex with E2 UBE2D2, which function not only for the ubiquitination of USP4 and IKBKB but also for its self-ubiquitination. It has a role in the regulation of the cell cycle progression and could enhance the decapping activity of DCP2. It can exist in all mammalian cells as a ribonucleoprotein particle , which composed of a single polypeptide and 1 of 4 small RNA molecules.
Synonyms:	RNF81; Ro; RO52; SSA; SSA1

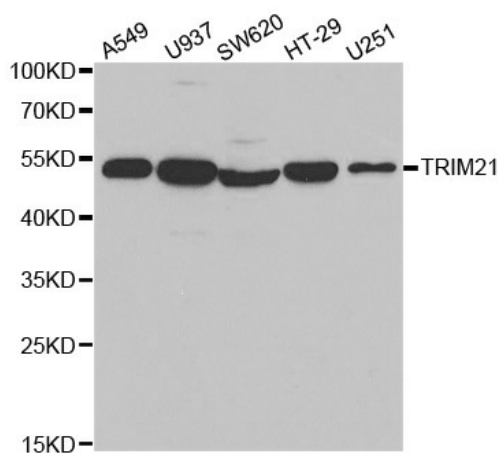


[View online »](#)

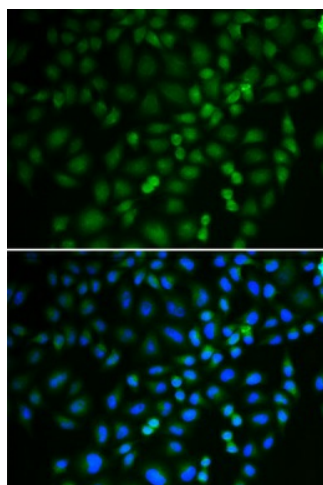
Protein Families: Druggable Genome

Protein Pathways: Systemic lupus erythematosus

Product images:



Western blot analysis of extracts of various cell lines, using TRIM21 antibody.



Immunofluorescence analysis of U2OS cell using TRIM21 antibody. Blue: DAPI for nuclear staining.