

## Product datasheet for **TA327220**

### MCM6 Rabbit Polyclonal Antibody

#### Product data:

Product Type:	Primary Antibodies
Applications:	ICC/IF, IP, WB
Recommended Dilution:	WB 1:500 - 1:2000;IF 1:50- 1:200
Reactivity:	Human, Mouse, Rat
Host:	Rabbit
Isotype:	IgG
Clonality:	Polyclonal
Immunogen:	Recombinant protein of human MCM6
Formulation:	Store at -20C or -80C. Avoid freeze / thaw cycles. Buffer: PBS with 0.02% sodium azide, 50% glycerol, pH7.3
Concentration:	lot specific
Purification:	Affinity purification
Conjugation:	Unconjugated
Storage:	Store at -20°C as received.
Stability:	Stable for 12 months from date of receipt.
Gene Name:	minichromosome maintenance complex component 6
Database Link:	<a href="#">NP_005906</a> <a href="#">Entrez Gene 17219 Mouse</a> <a href="#">Entrez Gene 29685 Rat</a> <a href="#">Entrez Gene 4175 Human</a> <a href="#">Q14566</a>

**Background:** The MCM genes were firstly identified in yeast defective in minichromosome maintenance and have since been shown to have roles in the progression of the cell cycle, and most of them are cell division control genes. MCM2-7 complex are suggested to be DNA licensing factors which bind to the DNA after mitosis and enable DNA replication before being removed during S phase. Mini-chromosome maintenance 6 (MCM6) is one component of the MCM2-7 complex which is the putative replicative helicase essential for once per cell cycle DNA replication initiation and elongation in eukaryotic cells. MCM6 single subunit forms homohexamer and contains an ATP-dependent and replication fork stimulated 3 to 5 DNA unwinding activity along with intrinsic DNA-dependent ATPase and ATP-binding activities.



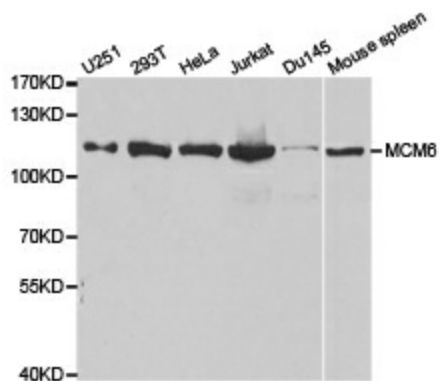
[View online »](#)

**Synonyms:** MCG40308; Mis5; P105MCM

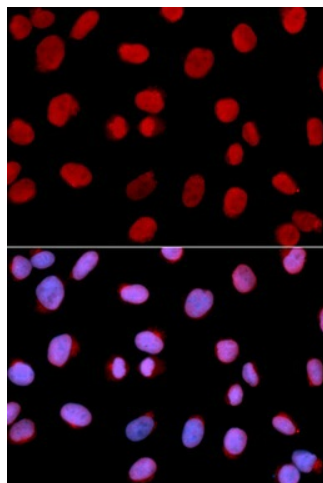
**Protein Families:** Stem cell - Pluripotency, Transcription Factors

**Protein Pathways:** Cell cycle, DNA replication

**Product images:**



Western blot analysis of extracts of 293 cell lines, using MCM6 antibody.



Immunofluorescence analysis of U2OS cell using MCM6 antibody. Blue: DAPI for nuclear staining.