

## Product datasheet for **TA327218**

### PSMD10 Rabbit Polyclonal Antibody

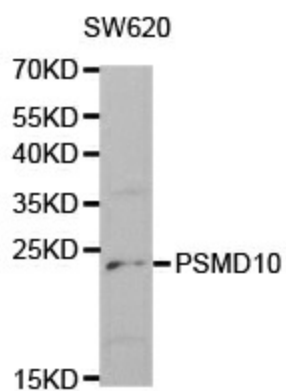
#### Product data:

Product Type:	Primary Antibodies
Applications:	IF, WB
Recommended Dilution:	WB 1:500 - 1:2000
Reactivity:	Human, Mouse, Rat
Host:	Rabbit
Isotype:	IgG
Clonality:	Polyclonal
Immunogen:	Recombinant protein of human PSMD10
Formulation:	Store at -20C or -80C. Avoid freeze / thaw cycles. Buffer: PBS with 0.02% sodium azide, 50% glycerol, pH7.3
Concentration:	lot specific
Purification:	Affinity purification
Conjugation:	Unconjugated
Storage:	Store at -20°C as received.
Stability:	Stable for 12 months from date of receipt.
Gene Name:	proteasome 26S subunit, non-ATPase 10
Database Link:	<a href="#">NP_002805</a> <a href="#">Entrez Gene 53380 Mouse</a> <a href="#">Entrez Gene 116722 Rat</a> <a href="#">Entrez Gene 5716 Human</a> <a href="#">O75832</a>
Background:	This gene encodes a subunit of the PA700/19S complex, which is the regulatory component of the 26S proteasome. The 26S proteasome complex is required for ubiquitin-dependent protein degradation. This protein is a non-ATPase subunit that may be involved in protein-protein interactions. Aberrant expression of this gene may paly a role in tumorigenesis. Two transcripts encoding different isoforms have been described. Pseudogenes have been identified on chromosomes 3 and 20. [provided by RefSeq, Mar 2011]
Synonyms:	dj889N15.2; p28; p28(GANK)



[View online »](#)

## Product images:



Western blot analysis of extracts of SW620 cell lines, using PSMD10 antibody.