

Product datasheet for **TA327217**

CD27 Rabbit Polyclonal Antibody

Product data:

Product Type:	Primary Antibodies
Applications:	ICC/IF, IHC, WB
Recommended Dilution:	WB 1:500 - 1:2000;IF 1:50- 1:200
Reactivity:	Human, Mouse, Rat
Host:	Rabbit
Isotype:	IgG
Clonality:	Polyclonal
Immunogen:	Recombinant protein of human CD27
Formulation:	Store at -20C or -80C. Avoid freeze / thaw cycles. Buffer: PBS with 0.02% sodium azide, 50% glycerol, pH7.3
Concentration:	lot specific
Purification:	Affinity purification
Conjugation:	Unconjugated
Storage:	Store at -20°C as received.
Stability:	Stable for 12 months from date of receipt.
Gene Name:	CD27 molecule
Database Link:	NP_001233 Entrez Gene 21940 Mouse Entrez Gene 500318 Rat Entrez Gene 939 Human P26842

Background: The protein encoded by this gene is a member of the TNF-receptor superfamily. This receptor is required for generation and long-term maintenance of T cell immunity. It binds to ligand CD70, and plays a key role in regulating B-cell activation and immunoglobulin synthesis. This receptor transduces signals that lead to the activation of NF-kappaB and MAPK8/JNK. Adaptor proteins TRAF2 and TRAF5 have been shown to mediate the signaling process of this receptor. CD27-binding protein (SIVA), a proapoptotic protein, can bind to this receptor and is thought to play an important role in the apoptosis induced by this receptor.

Synonyms: S152; S152. LPFS2; T14; TNFRSF7; Tp55

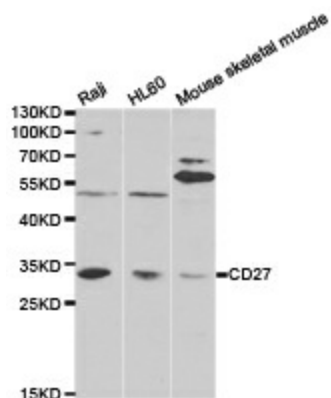
Protein Families: Druggable Genome, Transmembrane



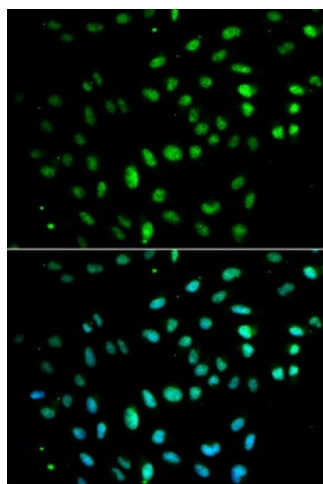
[View online »](#)

Protein Pathways: Cytokine-cytokine receptor interaction

Product images:



Western blot analysis of extracts of various cell lines, using CD27 antibody.



Immunofluorescence analysis of MCF7 cell using CD27 antibody. Blue: DAPI for nuclear staining.