

Product datasheet for **TA327209**

SynCAM (CADM1) Rabbit Polyclonal Antibody

Product data:

Product Type:	Primary Antibodies
Applications:	WB
Recommended Dilution:	WB: 1:500-1:2000
Reactivity:	Human, Mouse, Rat
Host:	Rabbit
Isotype:	IgG
Clonality:	Polyclonal
Immunogen:	Recombinant protein of human CADM1
Formulation:	Store at -20C or -80C. Avoid freeze / thaw cycles. Buffer: PBS with 0.02% sodium azide, 50% glycerol, pH7.3
Concentration:	lot specific
Purification:	Affinity purification
Conjugation:	Unconjugated
Storage:	Store at -20°C as received.
Stability:	Stable for 12 months from date of receipt.
Gene Name:	cell adhesion molecule 1
Database Link:	NP_055148 Entrez Gene 54725 Mouse Entrez Gene 363058 Rat Entrez Gene 23705 Human Q9BY67



[View online »](#)

Background:

Homologous to the poliovirus receptor (PVR/CD155), the Nectin immunoglobulin superfamily comprises four known isoforms, Nectin 1, 2, 3 and 4 (also designated TSLC1). TSLC1 is encoded by a tumor-suppressor gene in human non-small-cell lung cancer mapping to chromosome 11q23.2. The TSLC1 protein is an N-linked membrane glycoprotein that co-localizes with the Actin filament-binding protein, afadin, at cadherin-based adherens junctions in MDCKII epithelial cells. TSLC1 also interacts with the tumor-suppressor gene product DAL-1 (for differentially expressed in adenocarcinoma of the lung protein 1) to target Actin rearrangement and cellular motility. TSLC1 may also form homodimers that function in homophilic, intracellular adhesion. TSLC1 expression is reduced or absent in a number of characterized cancer cell lines including A549. In prostate and breast cancer, as well as in pancreatic ductal adenocarcinoma, the TSLC1 promoter is commonly silenced by hypermethylation. Unlike other Nectins, which are more widely expressed, TSLC1 is mainly expressed in the placenta.

Synonyms:

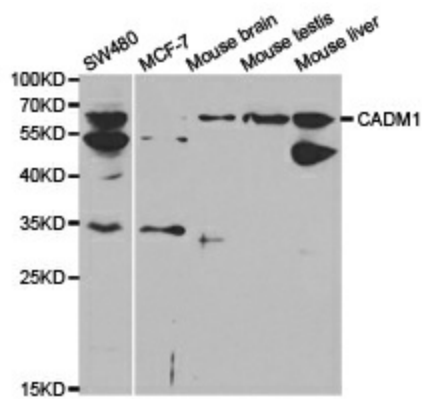
BL2; IGSF4; IGSF4A; Necl-2; NECL2; RA175; sglGSF; ST17; sTSLC-1; SYNCAM; synCAM1; TSLC1

Protein Families:

Transmembrane

Protein Pathways:

Cell adhesion molecules (CAMs)

Product images:

Western blot analysis of extracts of various cell lines, using CADM1 antibody.