

## Product datasheet for **TA327207S**

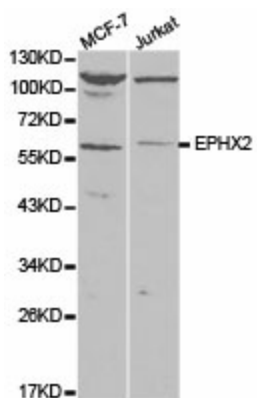
### EPHX2 Rabbit Polyclonal Antibody

#### Product data:

Product Type:	Primary Antibodies
Applications:	ICC/IF, WB
Recommended Dilution:	WB: 1:500-1:1000
Reactivity:	Human, Mouse, Rat
Host:	Rabbit
Isotype:	IgG
Clonality:	Polyclonal
Immunogen:	Recombinant protein of human EPXH2
Formulation:	Store at -20C or -80C. Avoid freeze / thaw cycles. Buffer: PBS with 0.02% sodium azide, 50% glycerol, pH7.3
Concentration:	lot specific
Purification:	Affinity purification
Conjugation:	Unconjugated
Storage:	Store at -20°C as received.
Stability:	Stable for 12 months from date of receipt.
Gene Name:	epoxide hydrolase 2
Database Link:	<a href="#">NP_001970</a> <a href="#">Entrez Gene 13850 Mouse</a> <a href="#">Entrez Gene 65030 Rat</a> <a href="#">Entrez Gene 2053 Human</a> <a href="#">P34913</a>
Background:	This gene encodes a member of the epoxide hydrolase family. The protein, found in both the cytosol and peroxisomes, binds to specific epoxides and converts them to the corresponding dihydrodiols. Mutations in this gene have been associated with familial hypercholesterolemia. Alternatively spliced transcript variants have been described.
Synonyms:	CEH; SEH
Protein Pathways:	Arachidonic acid metabolism, Metabolic pathways



[View online »](#)

**Product images:**

Western blot analysis of extracts of various cell lines, using EPXH2 antibody.