

Product datasheet for **TA327202S**

DNA Ligase I (LIG1) Rabbit Polyclonal Antibody

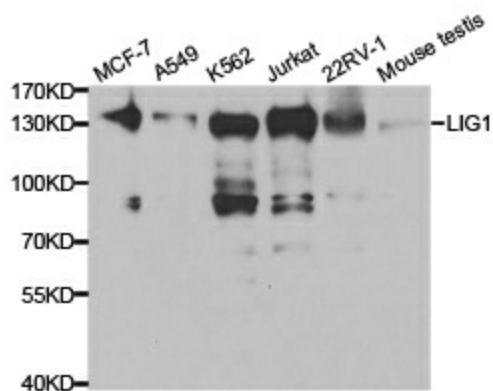
Product data:

Product Type:	Primary Antibodies
Applications:	ICC/IF, WB
Recommended Dilution:	WB 1:500 - 1:2000;IF 1:50- 1:200
Reactivity:	Human, Mouse
Host:	Rabbit
Isotype:	IgG
Clonality:	Polyclonal
Immunogen:	Recombinant protein of human LIG1
Formulation:	Store at -20C or -80C. Avoid freeze / thaw cycles. Buffer: PBS with 0.02% sodium azide, 50% glycerol, pH7.3
Concentration:	lot specific
Purification:	Affinity purification
Conjugation:	Unconjugated
Storage:	Store at -20°C as received.
Stability:	Stable for 12 months from date of receipt.
Gene Name:	DNA ligase 1
Database Link:	NP_000225 Entrez Gene 16881 Mouse Entrez Gene 3978 Human P18858
Background:	LIG1 encodes DNA ligase I, with functions in DNA replication and the base excision repair process. Mutations in LIG1 that lead to DNA ligase I deficiency result in immunodeficiency and increased sensitivity to DNA-damaging agents. [provided by RefSeq, Jul 2008]
Synonyms:	MGC117397; MGC130025
Protein Families:	Druggable Genome
Protein Pathways:	Base excision repair, DNA replication, Mismatch repair, Nucleotide excision repair

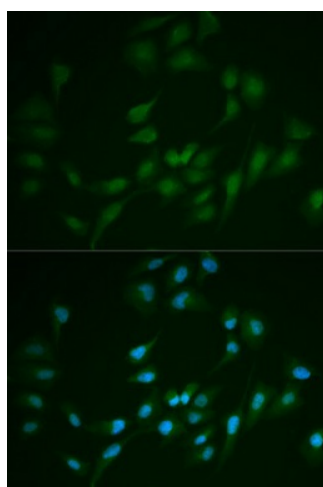


[View online »](#)

Product images:



Western blot analysis of extracts of various cell lines, using LIG1 antibody.



Immunofluorescence analysis of MCF7 cell using LIG1 antibody. Blue: DAPI for nuclear staining.