

Product datasheet for **TA327201**

HSPA1L Rabbit Polyclonal Antibody

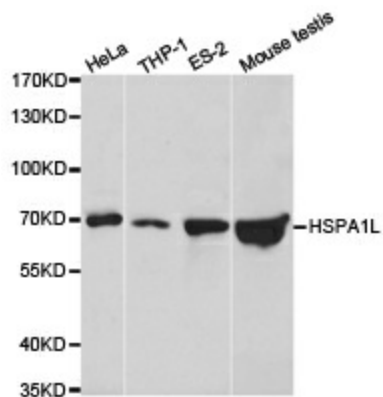
Product data:

Product Type:	Primary Antibodies
Applications:	WB
Recommended Dilution:	WB 1:500 - 1:2000
Reactivity:	Human, Mouse
Host:	Rabbit
Isotype:	IgG
Clonality:	Polyclonal
Immunogen:	Recombinant protein of human HSPA1L
Formulation:	Store at -20C or -80C. Avoid freeze / thaw cycles. Buffer: PBS with 0.02% sodium azide, 50% glycerol, pH7.3
Concentration:	lot specific
Purification:	Affinity purification
Conjugation:	Unconjugated
Storage:	Store at -20°C as received.
Stability:	Stable for 12 months from date of receipt.
Gene Name:	heat shock protein family A (Hsp70) member 1 like
Database Link:	NP_005518 Entrez Gene 15482 Mouse Entrez Gene 3305 Human P34931
Background:	This gene encodes a 70kDa heat shock protein. In conjunction with other heat shock proteins, this protein stabilizes existing proteins against aggregation and mediates the folding of newly translated proteins in the cytosol and in organelles. The gene is located in the major histocompatibility complex class III region, in a cluster with two closely related genes which also encode isoforms of the 70kDa heat shock protein. [provided by RefSeq, Jul 2008]
Synonyms:	HSP70-1L; HSP70-HOM; HSP70T; hum70t
Protein Pathways:	Antigen processing and presentation, Endocytosis, MAPK signaling pathway, Spliceosome



[View online »](#)

Product images:



Western blot analysis of extracts of various cell lines, using HSPA1L antibody.