

## Product datasheet for **TA327200S**

### Liver Carboxylesterase 1 (CES1) Rabbit Polyclonal Antibody

#### Product data:

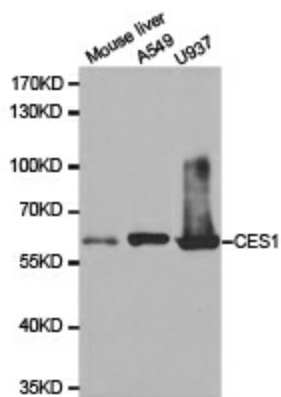
Product Type:	Primary Antibodies
Applications:	WB
Recommended Dilution:	WB: 1:500-1:2000
Reactivity:	Human, Mouse
Host:	Rabbit
Isotype:	IgG
Clonality:	Polyclonal
Immunogen:	Recombinant protein of human CES1
Formulation:	Store at -20C or -80C. Avoid freeze / thaw cycles. Buffer: PBS with 0.02% sodium azide, 50% glycerol, pH7.3
Concentration:	lot specific
Purification:	Affinity purification
Conjugation:	Unconjugated
Storage:	Store at -20°C as received.
Stability:	Stable for 12 months from date of receipt.
Gene Name:	carboxylesterase 1
Database Link:	<a href="#">NP_001257</a> <a href="#">Entrez Gene 1066 Human P23141</a>
Background:	This gene encodes a member of the carboxylesterase large family. The family members are responsible for the hydrolysis or transesterification of various xenobiotics, such as cocaine and heroin, and endogenous substrates with ester, thioester, or amide bonds. They may participate in fatty acyl and cholesterol ester metabolism, and may play a role in the blood-brain barrier system. This enzyme is the major liver enzyme and functions in liver drug clearance. Mutations of this gene cause carboxylesterase 1 deficiency. Three transcript variants encoding three different isoforms have been found for this gene.
Synonyms:	ACAT; CE-1; CEH; CES2; hCE-1; HMSE; HMSE1; PCE-1; REH; SES1; TGH
Protein Families:	Druggable Genome



[View online »](#)

Protein Pathways: Drug metabolism - other enzymes

### Product images:



Western blot analysis of extracts of various cell lines, using CES1 antibody.