

Product datasheet for **TA327197**

RPGR Rabbit Polyclonal Antibody

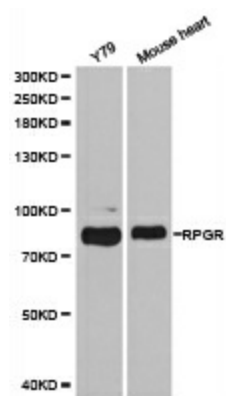
Product data:

Product Type:	Primary Antibodies
Applications:	ICC/IF, IHC, WB
Recommended Dilution:	WB 1:500 - 1:2000
Reactivity:	Human, Mouse, Rat
Host:	Rabbit
Isotype:	IgG
Clonality:	Polyclonal
Immunogen:	Recombinant protein of human RPGR
Formulation:	Store at -20C or -80C. Avoid freeze / thaw cycles. Buffer: PBS with 0.02% sodium azide, 50% glycerol, pH7.3
Concentration:	lot specific
Purification:	Affinity purification
Conjugation:	Unconjugated
Storage:	Store at -20°C as received.
Stability:	Stable for 12 months from date of receipt.
Gene Name:	retinitis pigmentosa GTPase regulator
Database Link:	NP_000319 Entrez Gene 19893 Mouse Entrez Gene 367733 Rat Entrez Gene 6103 Human Q92834
Background:	This gene encodes a protein with a series of six RCC1-like domains (RLDs), characteristic of the highly conserved guanine nucleotide exchange factors. The encoded protein is found in the Golgi body and interacts with RPGRIP1. This protein localizes to the outer segment of rod photoreceptors and is essential for their viability. Mutations in this gene have been associated with X-linked retinitis pigmentosa (XLRP). Multiple alternatively spliced transcript variants that encode different isoforms of this gene have been reported, but the full-length natures of only some have been determined. [provided by RefSeq, Dec 2008]
Synonyms:	COD1; CORDX1; CRD; orf15; PCDX; RP3; RP15; XLRP3
Protein Families:	Druggable Genome



[View online »](#)

Product images:



Western blot analysis of extracts of various cell lines, using RPGR antibody.