

## Product datasheet for **TA327192**

### DNA polymerase eta (POLH) Rabbit Polyclonal Antibody

#### Product data:

Product Type:	Primary Antibodies
Applications:	ICC/IF, WB
Recommended Dilution:	WB 1:500 - 1:2000;IF 1:50- 1:200
Reactivity:	Human, Mouse, Rat
Host:	Rabbit
Isotype:	IgG
Clonality:	Polyclonal
Immunogen:	Recombinant protein of human POLH
Formulation:	PBS with 0.09% Sodium azide,50% glycerol,pH7.3.
Concentration:	lot specific
Purification:	Affinity purification
Conjugation:	Unconjugated
Storage:	Store at -20°C as received.
Stability:	Stable for 12 months from date of receipt.
Gene Name:	polymerase (DNA) eta
Database Link:	<a href="#">NP_006493</a> <a href="#">Entrez Gene 80905 Mouse</a> <a href="#">Entrez Gene 316235 Rat</a> <a href="#">Entrez Gene 5429 Human</a> <a href="#">Q9Y253</a>

**Background:** This gene encodes a member of the Y family of specialized DNA polymerases. It copies undamaged DNA with a lower fidelity than other DNA-directed polymerases. However, it accurately replicates UV-damaged DNA; when thymine dimers are present, this polymerase inserts the complementary nucleotides in the newly synthesized DNA, thereby bypassing the lesion and suppressing the mutagenic effect of UV-induced DNA damage. This polymerase is thought to be involved in hypermutation during immunoglobulin class switch recombination. Mutations in this gene result in XPV, a variant type of xeroderma pigmentosum. [provided by RefSeq, Jul 2008]

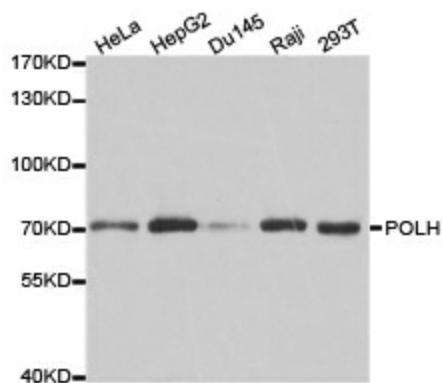
**Synonyms:** RAD30; RAD30A; XP-V; XPV

**Protein Families:** Druggable Genome

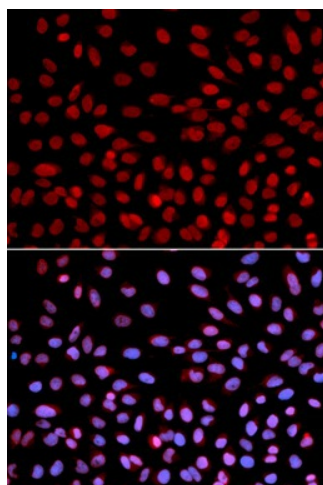


[View online »](#)

## Product images:



Western blot analysis of extracts of various cell lines, using POLH antibody.



Immunofluorescence analysis of U2OS cell using POLH antibody. Blue: DAPI for nuclear staining.