

## Product datasheet for **TA327191**

### IL2 Receptor gamma (IL2RG) Rabbit Polyclonal Antibody

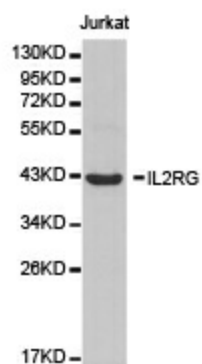
#### Product data:

Product Type:	Primary Antibodies
Applications:	WB
Recommended Dilution:	WB: 1:500-1:2000
Reactivity:	Human, Mouse
Host:	Rabbit
Isotype:	IgG
Clonality:	Polyclonal
Immunogen:	Recombinant protein of human IL2RG
Formulation:	PBS with 0.09% Sodium azide,50% glycerol,pH7.3.
Concentration:	lot specific
Purification:	Affinity purification
Conjugation:	Unconjugated
Storage:	Store at -20°C as received.
Stability:	Stable for 12 months from date of receipt.
Gene Name:	interleukin 2 receptor subunit gamma
Database Link:	<a href="#">NP_000197</a> <a href="#">Entrez Gene 16186 Mouse</a> <a href="#">Entrez Gene 3561 Human</a> <a href="#">P31785</a>
Background:	The protein encoded by this gene is an important signaling component of many interleukin receptors, including those of interleukin -2, -4, -7 and -21, and is thus referred to as the common gamma chain. Mutations in this gene cause X-linked severe combined immunodeficiency (XSCID), as well as X-linked combined immunodeficiency (XCID), a less severe immunodeficiency disorder.
Synonyms:	CD132; CIDX; IL-2RG; IMD4; P64; SCIDX; SCIDX1
Protein Families:	Druggable Genome, Transmembrane
Protein Pathways:	Cytokine-cytokine receptor interaction, Endocytosis, Jak-STAT signaling pathway, Primary immunodeficiency



[View online »](#)

## Product images:



Western blot analysis of extracts of Jurkat cell lines, using IL2RG antibody.