

## Product datasheet for **TA327187**

### Integrin beta 4 binding protein (EIF6) Rabbit Polyclonal Antibody

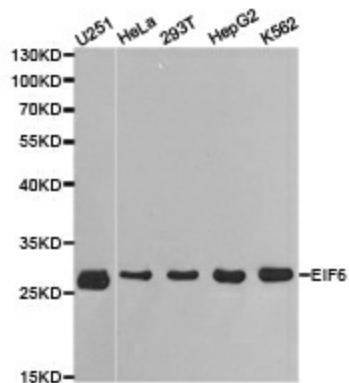
#### Product data:

Product Type:	Primary Antibodies
Applications:	ICC/IF, WB
Recommended Dilution:	WB 1:500 - 1:2000;IF 1:50- 1:200
Reactivity:	Human, Mouse, Rat
Host:	Rabbit
Isotype:	IgG
Clonality:	Polyclonal
Immunogen:	Recombinant protein of human EIF6
Formulation:	Store at -20C or -80C. Avoid freeze / thaw cycles. Buffer: PBS with 0.02% sodium azide, 50% glycerol, pH7.3
Concentration:	lot specific
Purification:	Affinity purification
Conjugation:	Unconjugated
Storage:	Store at -20°C as received.
Stability:	Stable for 12 months from date of receipt.
Gene Name:	eukaryotic translation initiation factor 6
Database Link:	<a href="#">NP_852133</a> <a href="#">Entrez Gene 16418 Mouse</a> <a href="#">Entrez Gene 305506 Rat</a> <a href="#">Entrez Gene 3692 Human</a> <a href="#">P56537</a>
Background:	Eukaryotic initiation factor 6 (eIF6) is required for the 60S ribosomal subunit assembly in the nucleolus. In the cytoplasm, this protein is bound to 60S ribosome subunits and prevents them from joining 40S ribosome subunits to form 80S ribosomes. eIF6 is also shown to associate with the RNA-induced silencing complex (RISC). Deletion of eIF6 abolishes the miRNA-mediated gene silencing. eIF6 may play its essential role in miRNA-mediated silencing by inhibiting translation initiation or ribosome recycling.
Synonyms:	b(2)gcn; CAB; eIF-6; EIF3A; ITGB4BP; p27(BBP); p27BBP
Protein Families:	Druggable Genome

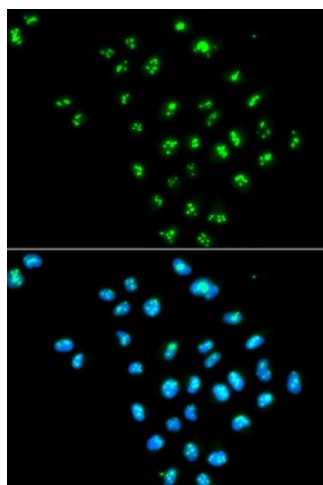


[View online »](#)

## Product images:



Western blot analysis of extracts of various cell lines, using EIF6 antibody.



Immunofluorescence analysis of MCF7 cell using EIF6 antibody. Blue: DAPI for nuclear staining.