

## Product datasheet for **TA327185**

### ICOS Rabbit Polyclonal Antibody

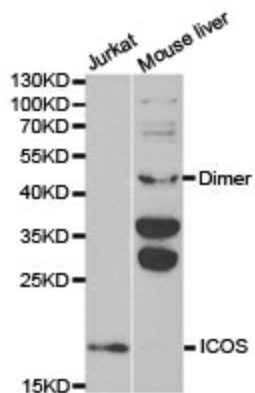
#### Product data:

Product Type:	Primary Antibodies
Applications:	ICC/IF, WB
Recommended Dilution:	WB 1:500 - 1:2000;IF 1:50- 1:200
Reactivity:	Human, Mouse, Rat
Host:	Rabbit
Isotype:	IgG
Clonality:	Polyclonal
Immunogen:	Recombinant protein of human ICOS
Formulation:	Store at -20C or -80C. Avoid freeze / thaw cycles. Buffer: PBS with 0.02% sodium azide, 50% glycerol, pH7.3
Concentration:	lot specific
Purification:	Affinity purification
Conjugation:	Unconjugated
Storage:	Store at -20°C as received.
Stability:	Stable for 12 months from date of receipt.
Gene Name:	inducible T-cell costimulator
Database Link:	<a href="#">NP_036224</a> <a href="#">Entrez Gene 54167 Mouse</a> <a href="#">Entrez Gene 64545 Rat</a> <a href="#">Entrez Gene 29851 Human</a> <a href="#">Q9Y6W8</a>
Background:	The protein encoded by this gene belongs to the CD28 and CTLA-4 cell-surface receptor family. It forms homodimers and plays an important role in cell-cell signaling, immune responses, and regulation of cell proliferation. [provided by RefSeq, Jul 2008]
Synonyms:	AILIM; CD278; CVID1
Protein Families:	Secreted Protein, Transmembrane
Protein Pathways:	Cell adhesion molecules (CAMs), Primary immunodeficiency, T cell receptor signaling pathway

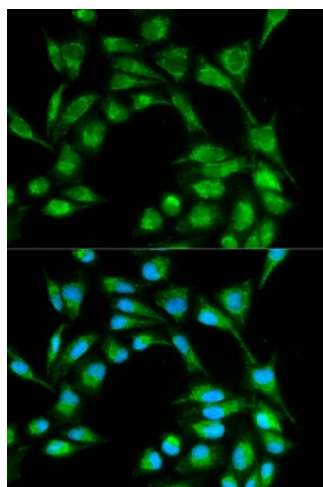


[View online »](#)

## Product images:



Western blot analysis of extracts of various cell lines, using ICOS antibody.



Immunofluorescence analysis of MCF7 cell using ICOS antibody. Blue: DAPI for nuclear staining.